



# Landscape Products

Elevate your outdoor space with Oaks.



**Slabs/Pavers:** Nueva® 60mm, Marble Grey with Classic Paver, Onyx border  
**Walls:** Nueva® 150 Wall, Marble Grey with Nueva® 75 Wall, Onyx accent

**Coping/Step Treads:** Nueva® Coping, Marble Grey



# Table of Contents

Introduction	02
Inspiration	04
Slabs + Pavers	11
Walls	33
Steps + Curbs	45
Copings + Caps	51
Planning + Specifications	57



MADE IN  
THE USA



MADE IN  
CANADA

**Products shown in this guide are  
manufactured in either the USA  
or Canada.**

Use these symbols to identify which products are  
made in the USA or Canada.

For Canadian-made products, please contact  
your local Oaks distributor or representative for  
availability and lead times.

Product representations shown in this publication are intended to convey the general color, texture and appearance of the product. Variations may occur in the manufacturing and printing process. Always select from current, physical product samples. Please refer to your local building code for proper installation of all products in this guide.



# Introduction

When you choose Oaks you make an investment in longevity, quality, aesthetics, and in us. We take that commitment seriously which motivates us to do more and do better. From state-of-the-art production facilities, to quality control, distribution and customer service, we ensure our products are made to last while exceeding our customers' expectations.

In the following pages, we invite you to get inspired and explore our diverse range of products while feeling confident that your selections are backed by our Strength and Integrity Guarantee.



Scan to view our  
Warranty information.



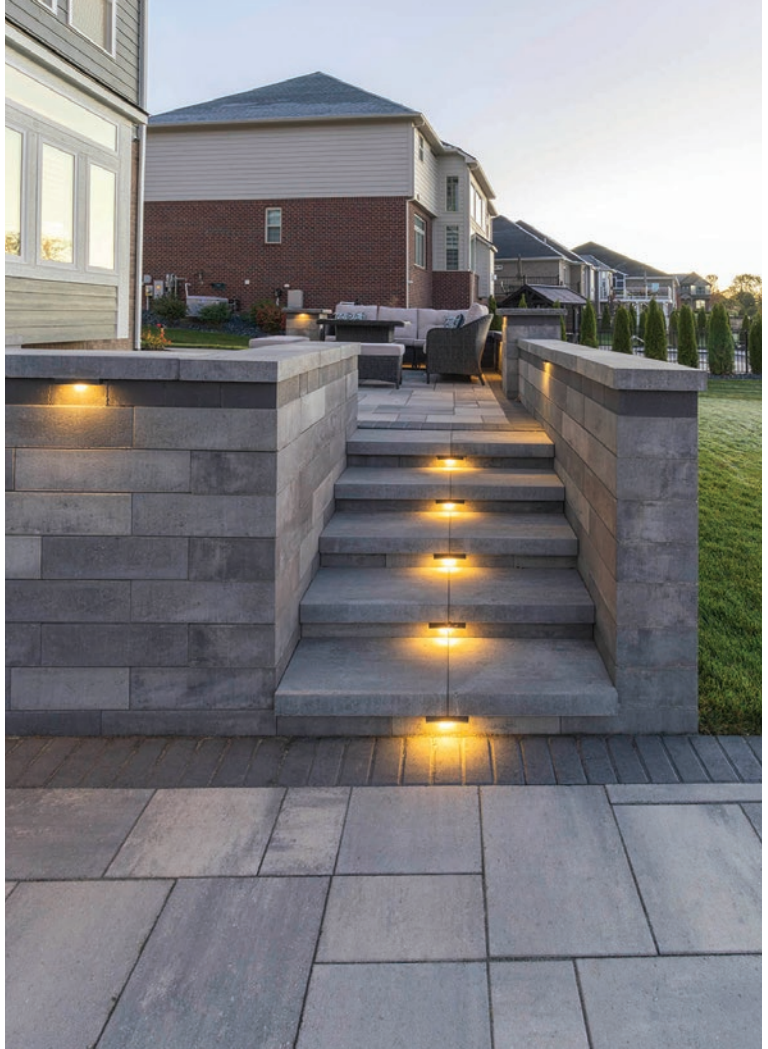


**Slabs/Pavers:** Nueva® 60mm, Marble Grey with Classic Paver, Marble Grey and Onyx borders  
**Fire pit:** Nueva® 150, Marble Grey with Nueva® Coping, Marble Grey

**Pillar:** Laredo Smooth, Marble Grey with Onyx accent  
**Steps:** Nueva® 150, Marble Grey with Nueva® Coping, Marble Grey

# Modern Simplicity

Designed for simplicity and versatility, the Nueva® collection creates a seamless foundation for modern landscapes. Its smooth surfaces, clean lines and contemporary aesthetic is carried through from slabs to walls to steps and copings in this thoughtfully planned backyard. Classic Paver in Onyx borders the patio to complete the look.





**Slabs/Pavers:** Nueva® 60mm, Marble Grey with Classic Paver, Onyx border  
**Walls/Fire pit:** Nueva® 150 Wall, Marble Grey with Nueva® 75 Wall, Onyx accent  
**Coping/Step Treads:** Nueva® Coping, Marble Grey



# Masterful Modularity

Oaks products are thoughtfully designed to work together, simplifying the planning and design process. The ability to mix and match across product lines while maintaining a fully coordinated look is what sets Oaks apart. This stunning project highlights that versatility through the use of Nueva® 60mm slabs, paired with Modan and Ortana walls, highlighted with Cassina coping and Classic Paver accents in Onyx.



**Upper Wall & Steps:** Ortana, Champagne with Ortana, Champagne coping  
**Lower Wall & Coping:** Modan, Twilight with Cassina, Onyx coping

**Slabs/Pavers:** Nueva® 60mm, Champagne with Classic Paver, Onyx border  
**Fire Feature:** Modan, Twilight

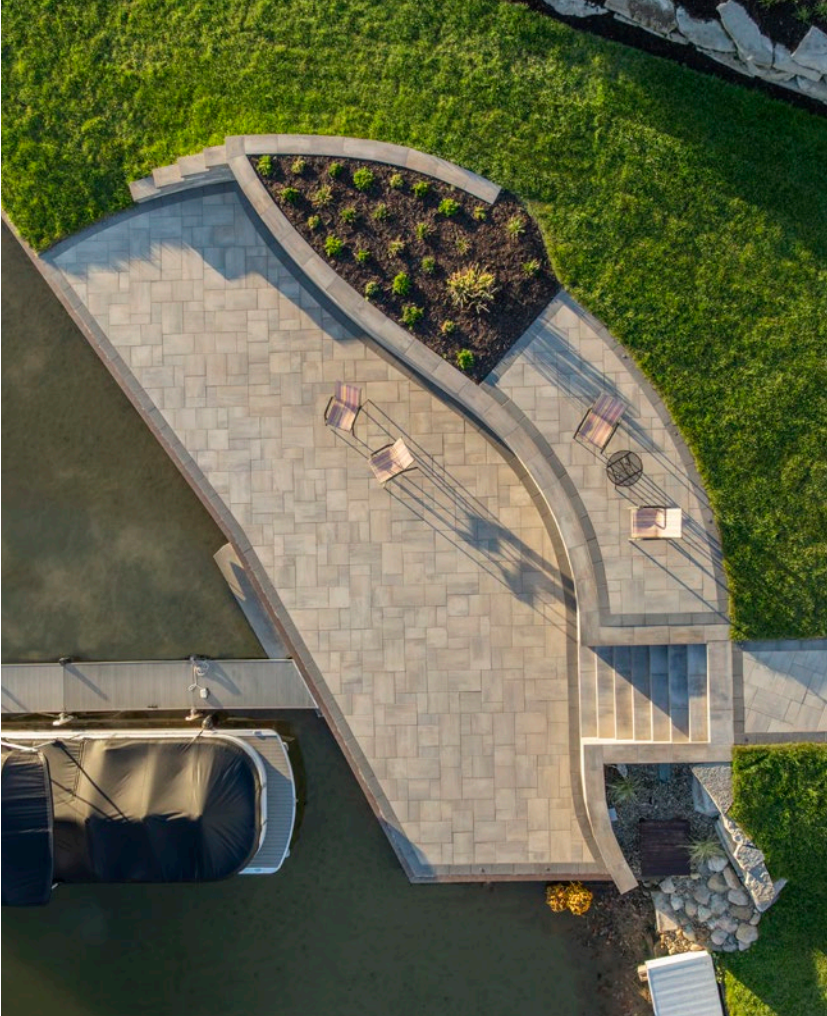


**Slabs:** Nueva® 60mm, Champagne with Onyx border  
**Steps:** Nueva® Step, Champagne

**Wall:** Nueva® 75 Wall, Champagne  
**Wall Coping:** Nueva® Coping, Champagne

# Artistry & Function

This project exemplifies the perfect balance of design artistry and function, brought to life with the Nueva® collection. Nueva® slabs, walls, steps and coping unify the space with understated elegance. The Nueva® 75 Wall commands attention in its sweeping curved application, becoming a striking focal point of the property, while the Nueva® 60mm slabs form a tile-like patio that beautifully complements the overall aesthetic—ideal for outdoor entertaining.



**Slabs:** Nueva® 60mm, Marble Grey  
**Wall:** Modan, Marble Grey  
**Coping:** Oasis, Marble Grey



**Slabs:** Yorkville 60mm, Milano  
**Coping:** Oasis, Milano



Slabs: Nueva® XL Slab, Marble Grey

# Slabs + Pavers

Technologies	12
Finishes + Textures	12
Accents + Patterns	14
Bonaire	16
Classic Paver	17
Colonnade	18
Everton	19
Market Paver	20
Molina®	21
Nueva® 60mm	22
Nueva® XL Slab	23
Nueva® 80mm	24
Yorkville	25
Rialto 60mm	26
Rialto 80mm	27
Strassa	28
Montebello	29
Ridgefield Smooth	30
Ridgefield Plus	31
Enviro Midori	32

## SLAB & PAVER ICON LEGEND



### Pedestrian

Suitable for pedestrian use only such as walkways or patios.



### Vehicular

Suitable for residential vehicular use such as driveways, as well as walkways and patios.



### Solar Reflectance

Colors with a higher number indicates greater reflectance and a cooler paver area.



### Permeable

Products designed to allow increased drainage.

# Technologies, Finishes + Textures

## ELITEFINISH™

### Enhanced finish and greater structural integrity.

EliteFinish™ is an advanced manufacturing process that delivers richer, more vibrant color and a smoother, harder wearing surface. The surface of our EliteFinish™ products is a specially engineered layer of finely-ground, durable aggregates combined with rich color and concentrated cement. The paver foundation uses coarser stone to ensure long term performance in application.



## COLORBOLD™

### Enhanced color longevity and stain resistance.

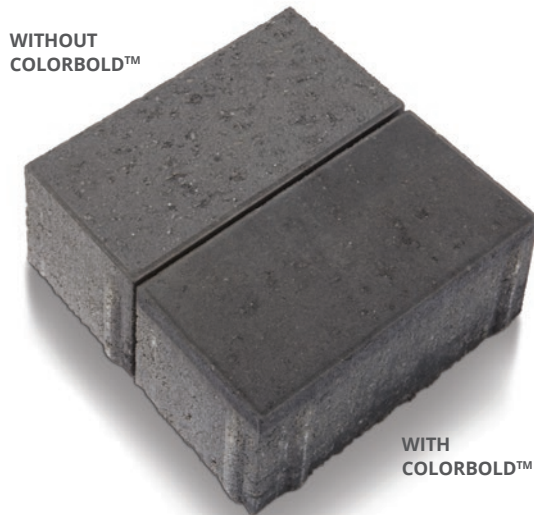
ColorBold™ is an additive treatment employed during manufacturing that provides a greater level of color longevity and stain resistance. It provides enhanced color depth, extended color durability and improved freeze-thaw capability due to decreased moisture absorption.

### Products with EliteFinish™

Bonaire .....	Page 16
Market Paver .....	Page 20
Molina® .....	Page 21
Montebello .....	Page 29
Strassa .....	Page 28
Yorkville .....	Page 25

### Products with Colorbold™

Bonaire .....	Page 16
Market Paver .....	Page 20
Molina® .....	Page 21
Strassa .....	Page 28





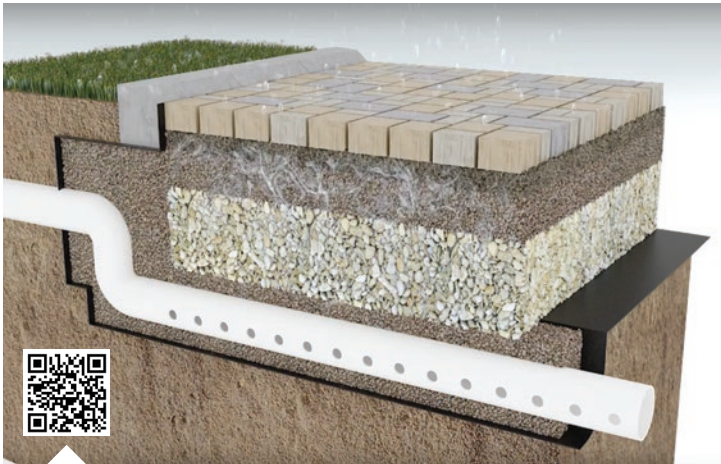
## PERMEABLE

### Pavers designed for storm water management.

Oaks permeable pavements are uniquely designed pavers that allow storm water to pass through the surface in to a special pavement base that allows water to be stored or drain into the natural soil to recharge ground water – just like nature intended.

#### Associated benefits may include:

- Eliminates surface water runoff
- Recharges groundwater through the paver joint and base structure
- Reduces erosion and sediment build-up
- Conform to municipal storm water regulations



[Learn more here](#)

### Permeable Products

Enviro Midori .....	Page 32
Strassa .....	Page 28
Hydr'eau Pave .....	VISIT OUR WEBSITE FOR INFO.
Turf-Slab .....	VISIT OUR WEBSITE FOR INFO.

## Smooth Texture



### CONTEMPORARY, MODERN, SLEEK

Smooth pavers with straight edges and clean lines are a popular choice for creating a modern and contemporary landscape. They add both prestige and timeless design to any landscape.

(Nueva® 60mm, Cloudburst pictured)

## Embossed Texture



### TRADITIONAL, NATURAL, WARM

Embossed pavers provide a more natural stone look and feel. They are ideal for creating spaces that blend with nature or when a warm and stately appearance is desired.

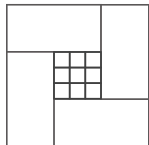
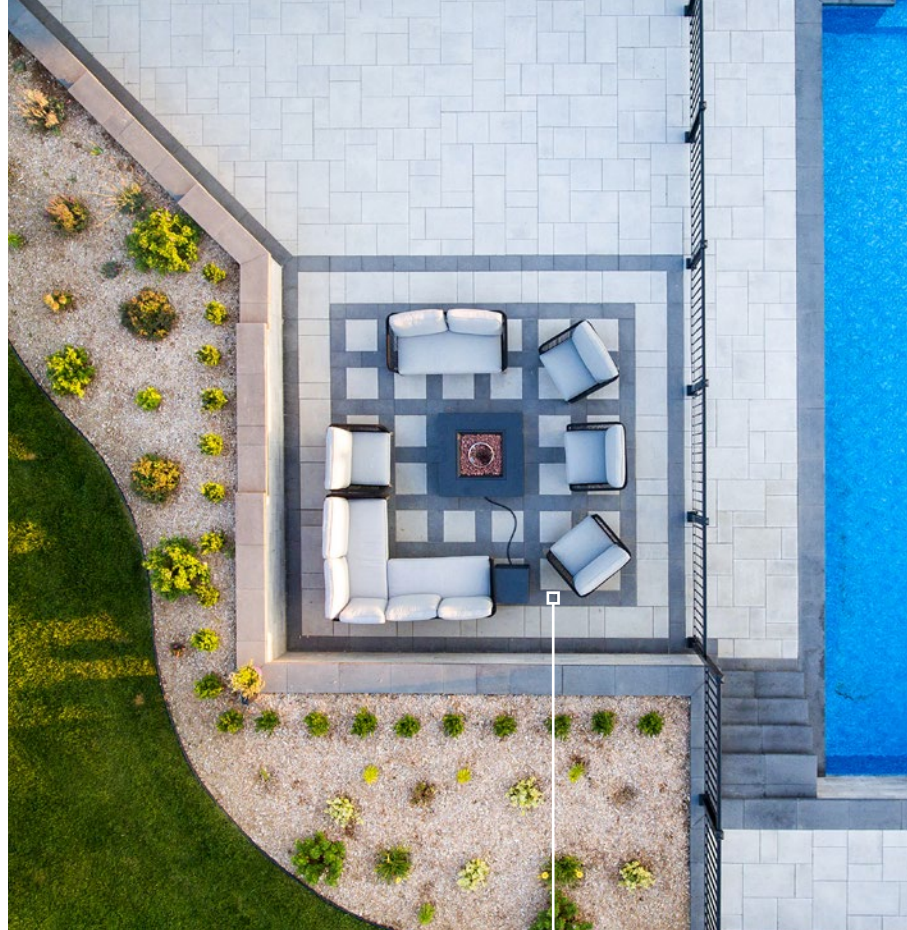
(Rialto 60mm, Champagne pictured)

# Accents + Patterns

Single-sized pavers and slabs unlock endless opportunities for accenting and pattern design throughout your landscape. Define distinct spaces with thoughtful laying patterns and borders, or create striking focal points using herringbone, basketweave, or stack bond layouts. The design possibilities are entirely yours.

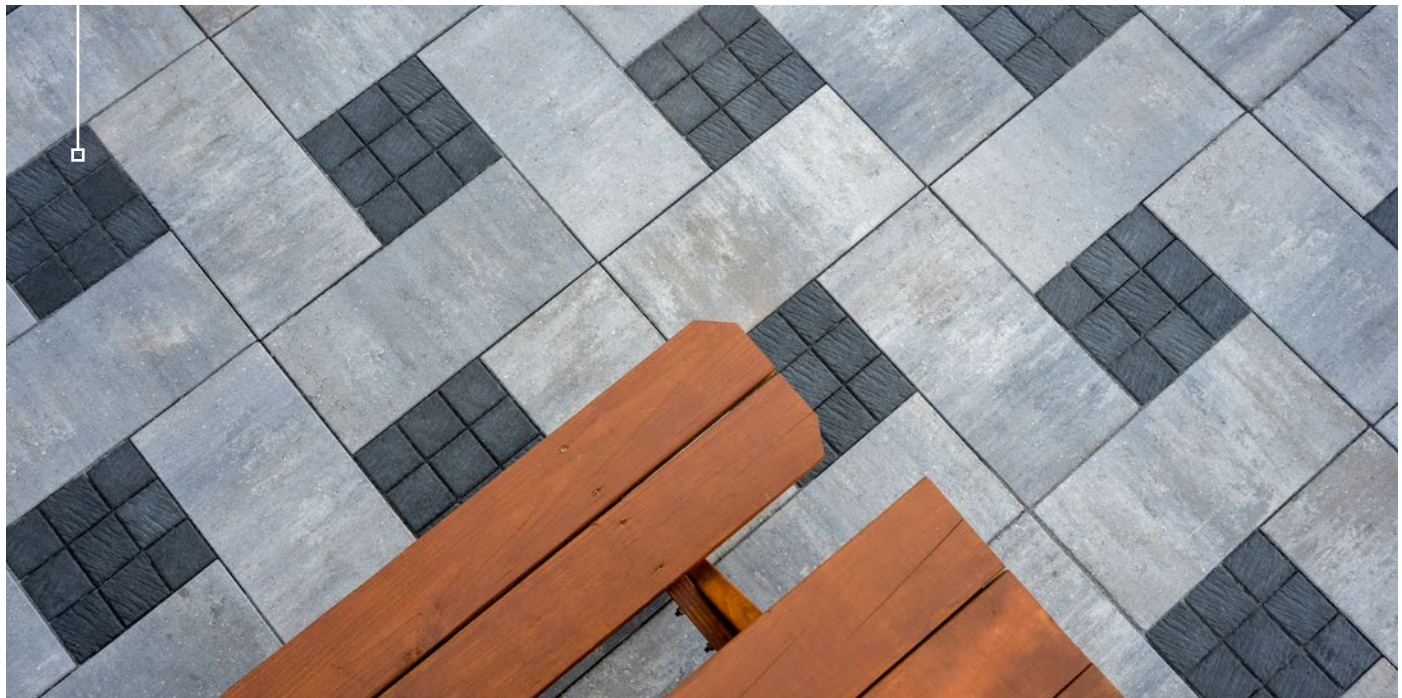
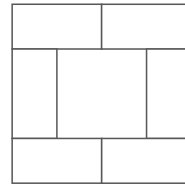
Oaks offers individually packaged, single-sized pavers and slabs within select product lines or as standalone series.

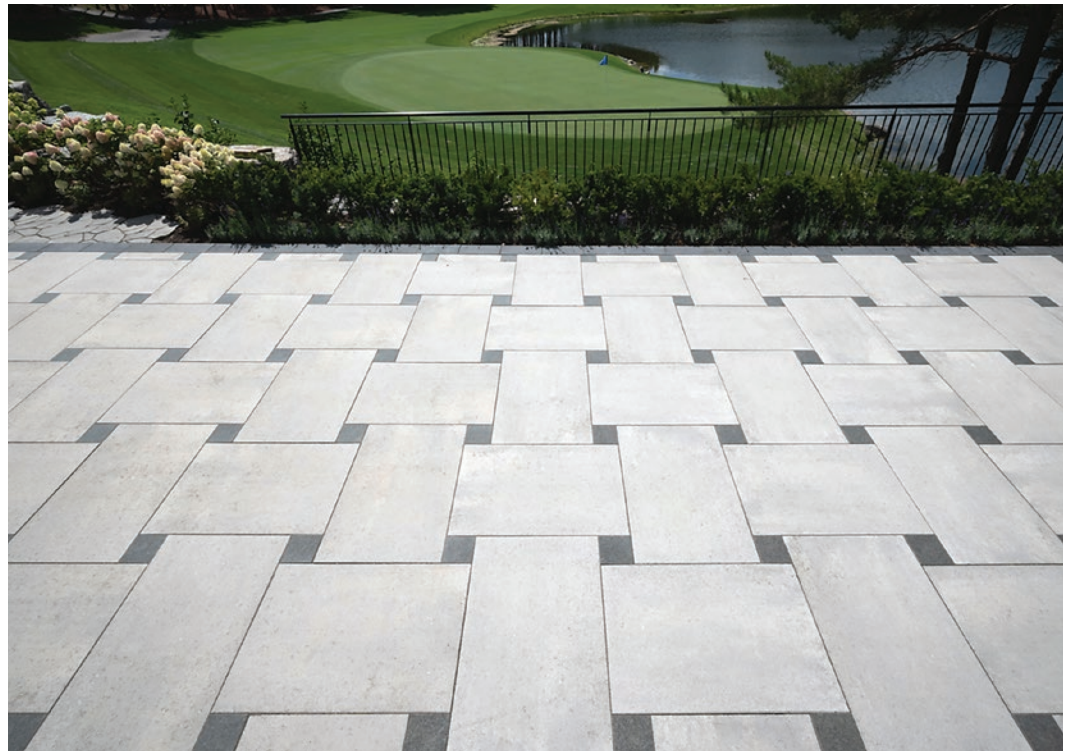
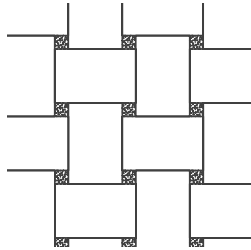
See more pattern ideas are on page 60.



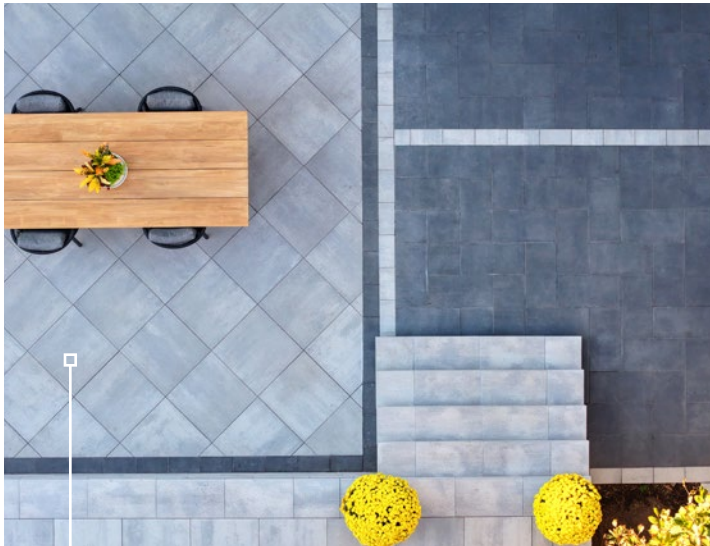
Bonaire, Twilight (4x4 Stone) and Nueva® 60mm, Champagne (12x24 Rectangle), create a stunning geometric pattern in this patio.

Nueva® 60mm, Cloudburst (Random) used creatively with Onyx (8x16 Small Rectangle Stone) borders can create a unique faux rug pattern for a seating area.



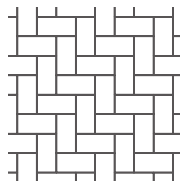


Nueva® XL Slab, Cloudburst in a basketweave laying pattern creates dimension and visual interest in this expansive patio. Shown with a 6"x6" natural stone accent.



Molina® 60mm, Cloudburst (24x24 Stone) patterned in an angled stack bond and 8x16 Stone borders define and separate the dining area in this modern backyard. Molina® 60mm, Twilight (12x24 Stone) in a herringbone pattern creates another well defined area in this landscape.

Strassa, with its cobble-stone look and striking color pallet, is the perfect companion for accenting and creating borders. This pathway in College Red color and herringbone pattern adds direction, contrast and elegance to this patio.



# Bonaire 60mm



Manufactured with:



SIZE - Available in 60mm thickness only.



**4x4 Stone**  
4 x 4"  
(100 x 100mm)  
**Individually  
Packaged**

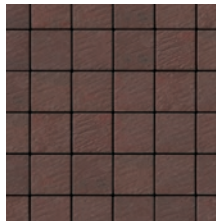
## Accenting + Patterning with Bonaire

Bonaire's small 4x4 Stone size, textured surface and diverse range of colors, makes it a unique product for accenting and patterning with Oaks' other 60mm slab and paver products.

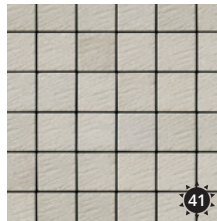
### COLORS



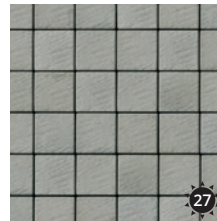
BISCUIT



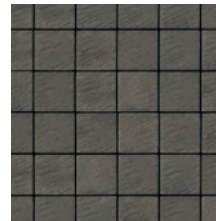
COLLEGE RED



DOVER

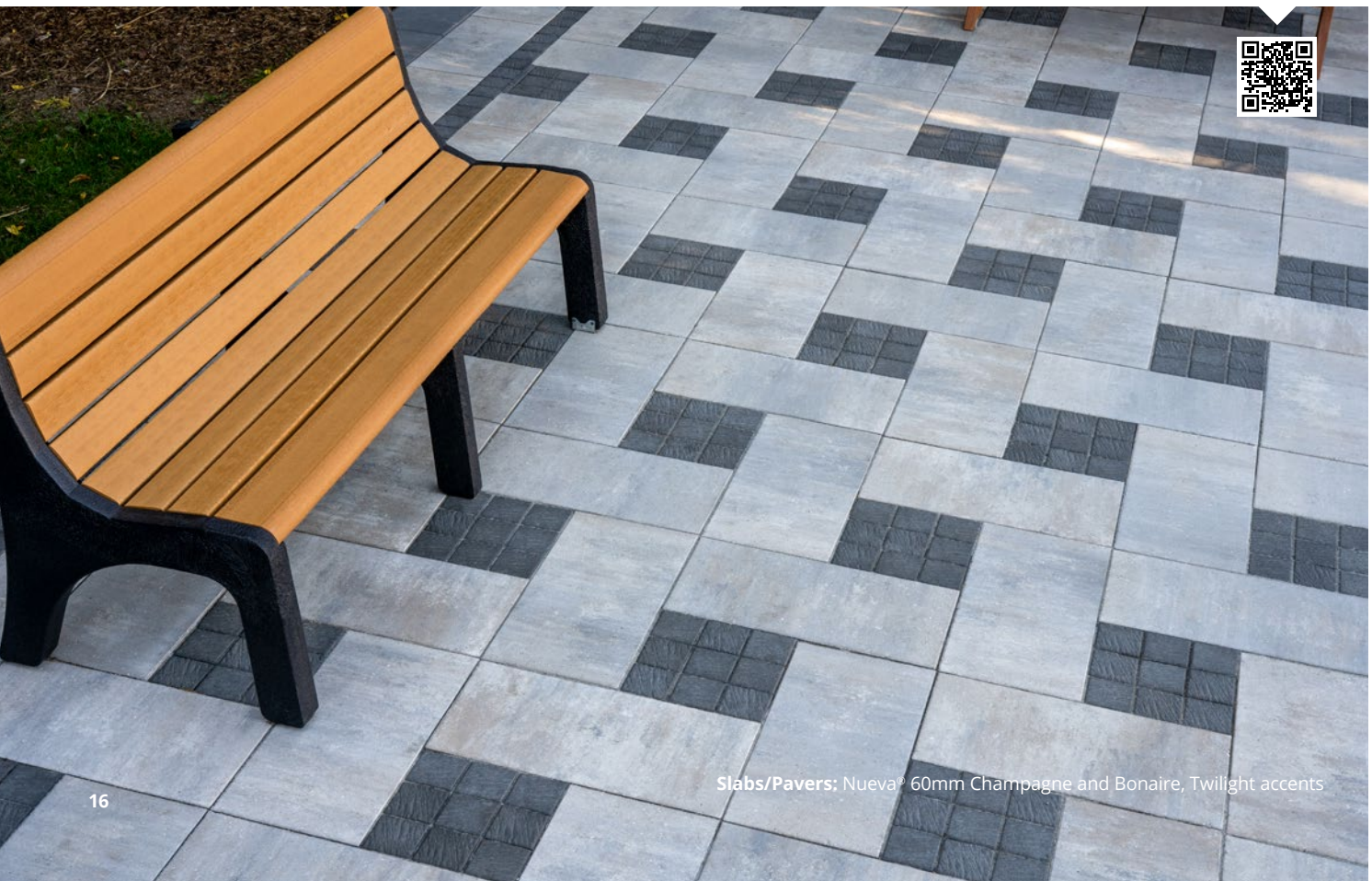


NICKEL



TWILIGHT

Learn more about  
Bonaire



Slabs/Pavers: Nueva® 60mm Champagne and Bonaire, Twilight accents

# Classic Paver 60mm

SIZE - Available in 60mm thickness only.



**4x4 Stone**  
3.94 x 3.94"  
(100 x 100mm)



**4x8 Stone**  
3.94 x 7.87"  
(100 x 200mm)

**STANDARD BUNDLE**

Both stones packaged together

## Accenting + Patterning with Classic Paver

Classic Pavers 4x8 Stone and versatile color palette, makes it a perfect product for accenting and patterning with Oaks' other slab and paver products.

### COLORS



CHAMPAGNE



MARBLE GREY



CHESTNUT



ONYX

Learn more about  
Classic Paver



**Slabs/Pavers:** Nueva® Slab, Marble Grey with Classic Paver, Marble Grey and Onyx borders  
**Steps:** Nueva® 150, Marble Grey with Nueva® Coping, Marble Grey treads

# Colonnade 60mm

SIZES - Available in 60mm thickness only.



**3x6 Stone**  
2.95 x 5.91"  
(75 x 150mm)



**6x6 Stone**  
5.91 x 5.91"  
(150 x 150mm)



**6x9 Stone**  
5.91 x 8.86"  
(150 x 225mm)  
**Individually  
Packaged**



**9x9 Stone**  
8.86 x 8.86"  
(225 x 225mm)  
**Individually  
Packaged**



**9x12 Stone**  
8.86 x 11.81"  
(225 x 300mm)  
**Individually  
Packaged**

**COMBO BUNDLE**

Both stones packaged together

**COLORS**



GREYFIELD



ONYX

Available in  
6x9 Stone only.  
Ideal for soldier  
coursing or banding.



SANDALWOOD



SILVERSAND



TIMBERWOOD

Learn more about  
Colonnade



Pavers: Colonnade, Silversand

# Everton 60mm

SIZES - Available in 60mm thickness only.



**5x10 Stone**  
4.72 x 9.45"  
(120 x 240mm)



**10x10 Stone**  
9.45 x 9.45"  
(240 x 240mm)



**10x15 Stone**  
9.45 x 14.17"  
(240 x 360mm)

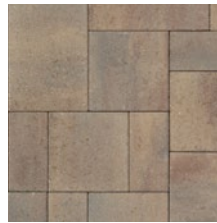
### RANDOM BUNDLE

All 3 stones packaged together

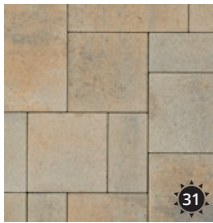
### COLORS



GREYSTONE



SANDALWOOD



SILVERSAND

Learn more about  
Everton



# Market Paver 60/80mm



Manufactured with:



SIZE - Available in 60mm or 80mm thickness.

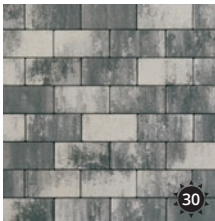


**4x8 Stone**  
3.94 x 7.87"  
(100 x 200mm)  
**Individually  
Packaged**

## Accenting + Patterning with Market Paver

Market Pavers single-size 4x8 Stone and bold color palette, makes it a perfect product for accenting and patterning with Oaks' other slab and paver products.

### COLORS



MARBLE GREY



ONYX



SANGRIA



SERENGETI

Learn more about  
Market Paver





**SIZES** - Available in 60mm or 80mm thickness, except where noted.



**6x12 Stone**  
5.91 x 11.81"  
(150 x 300mm)  
**Individually  
Packaged**



**12x24 Stone**  
11.81 x 23.62"  
(300 x 600mm)  
**Individually  
Packaged**



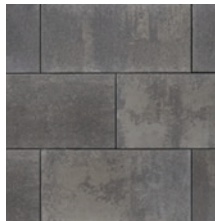
**24x24 Stone**  
23.62 x 23.62"  
(600 x 600mm)  
**Individually  
Packaged**

> Available in  
60mm ONLY

## COLORS



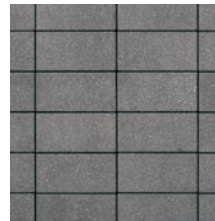
CLOUDBURST



LUNA



TWILIGHT

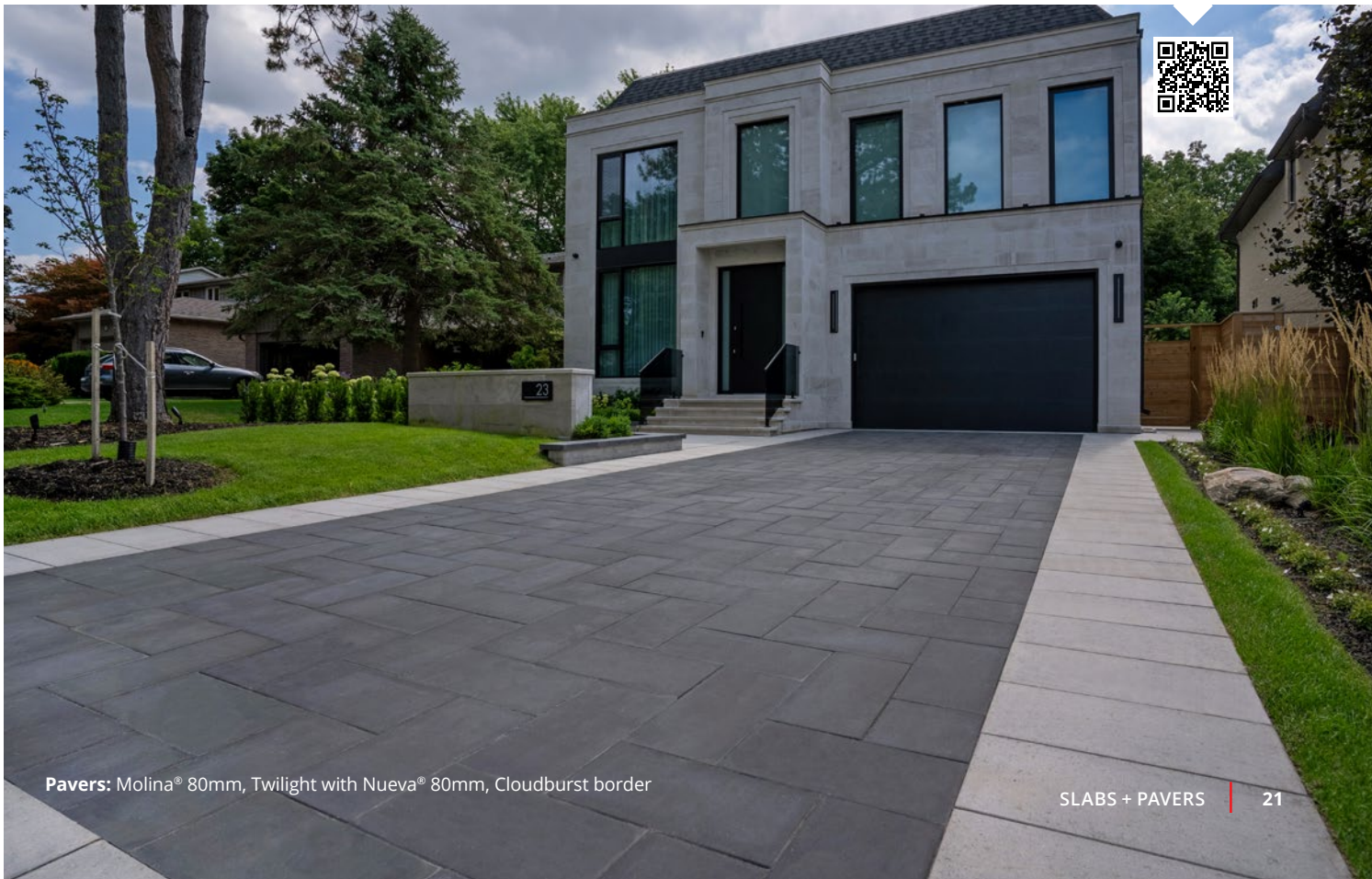


TWILIGHT,  
FERRO FINISH

Ferro Finish is a slip-resistant finish, ideal for soldier coursing, banding and accents.

**Stocked in 6x12 Stone size only.**

Learn more about  
Molina®



Pavers: Molina® 80mm, Twilight with Nueva® 80mm, Cloudburst border

# Nueva® 60mm

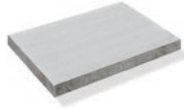
SIZES - Available in a 60mm thickness.



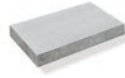
**8x16 Small Rectangle**  
7.87 x 15.75"  
(200 x 400mm)



**16x16 Stone**  
15.75 x 15.75"  
(400 x 400mm)




**16x24 Stone**  
15.75 x 23.62"  
(400 x 600mm)



**8x16 Small Rectangle**  
7.87 x 15.75"  
(200 x 400mm)  
**Individually  
Packaged**



**12x24 Rectangle**   
11.81 x 23.62"  
(300 x 600mm)  
**Individually  
Packaged**



**16x32 Large Rectangle**  
15.75 x 31.50"  
(400 x 800mm)  
**Individually  
Packaged**

**RANDOM BUNDLE**

All 3 stones packaged together

Available in Chestnut  
and Onyx only

**Note:** When using 12x24 Rectangle with other sizes within the Nueva® product line, please note that colors and tonal consistency may not be exact matches.

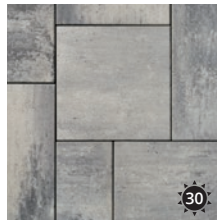
**COLORS**



CHAMPAGNE



CLOUDBURST



MARBLE GREY



MILANO



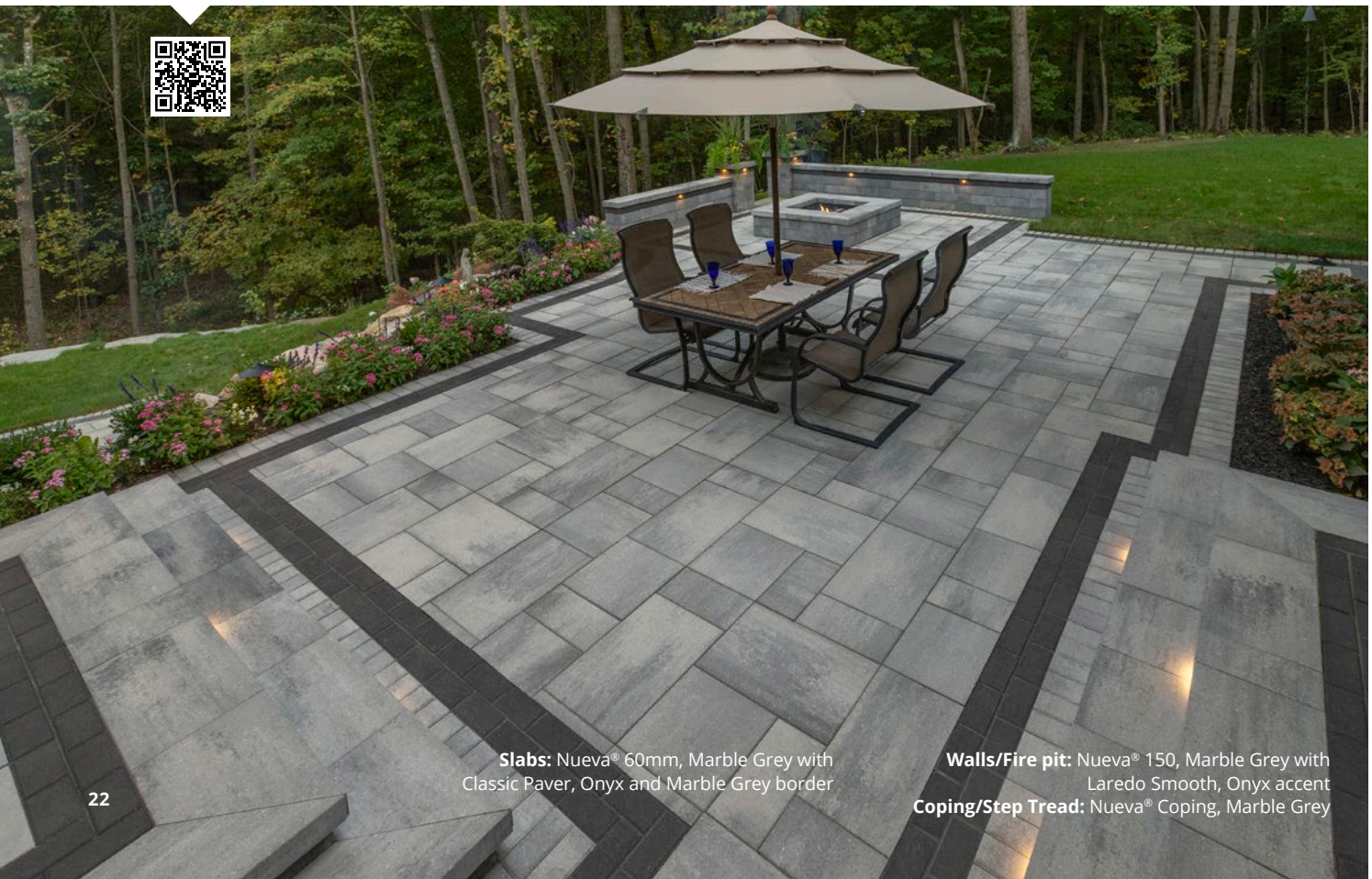
CHESTNUT



ONYX

Learn more about  
Nueva® 60mm

Available in 8x16  
Small Rectangle size  
only. Ideal for soldier  
coursing or banding.



**Slabs:** Nueva® 60mm, Marble Grey with Classic Paver, Onyx and Marble Grey border

**Walls/Fire pit:** Nueva® 150, Marble Grey with Laredo Smooth, Onyx accent  
**Coping/Step Tread:** Nueva® Coping, Marble Grey

# Nueva® XL Slab 60mm

SIZE - Available in a 60mm thickness only.



**24x36 Stone**  
23.62 x 35.43"  
(600 x 900mm)  
**Individually  
Packaged**

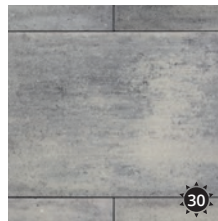
## COLORS



CHAMPAGNE 



CLOUDBURST 



MARBLE GREY 

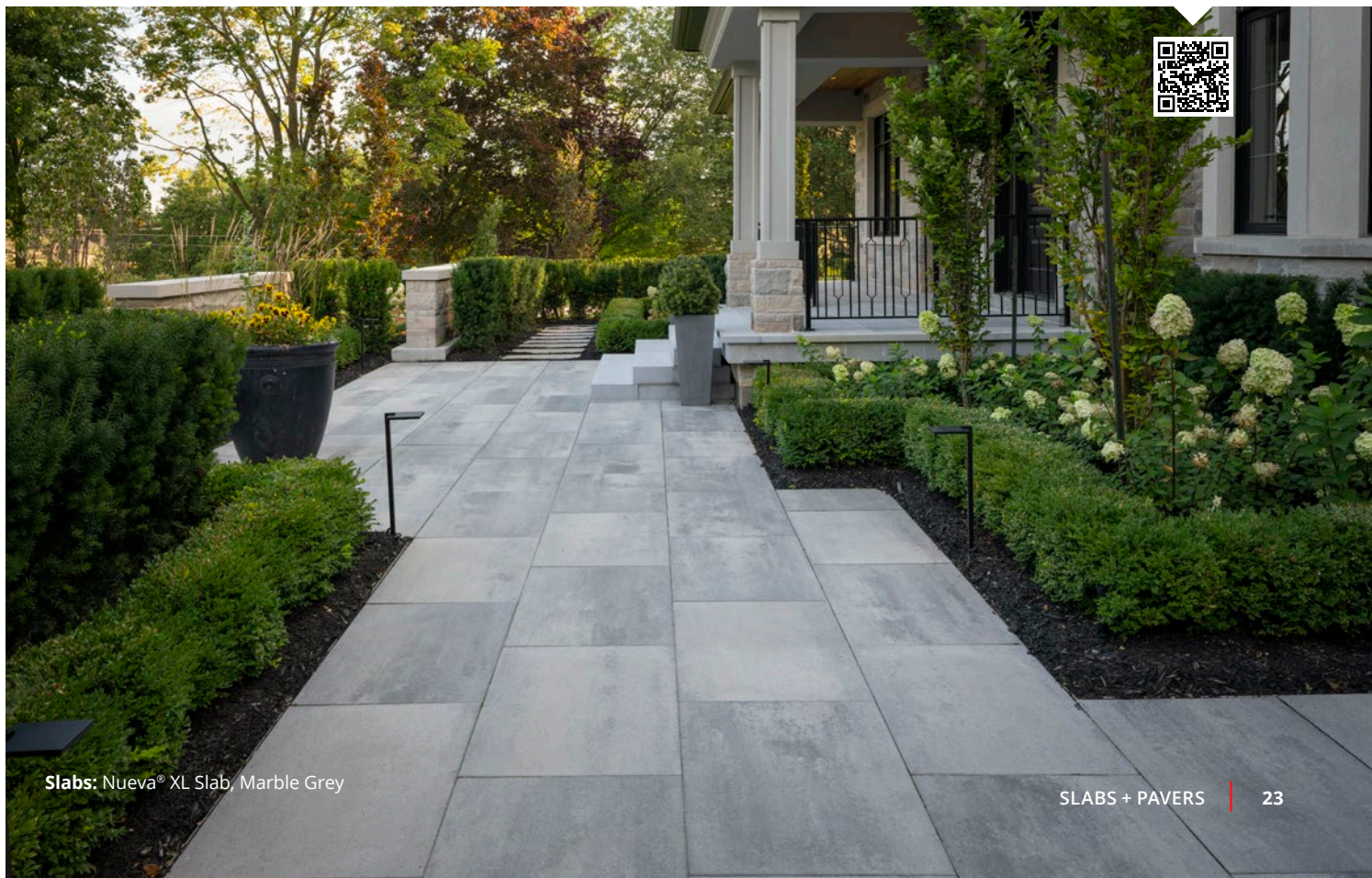


MILANO 



ONYX 

Learn more about  
Nueva® XL Slab



Slabs: Nueva® XL Slab, Marble Grey

# Nueva® 80mm

SIZES - Available in a 80mm thickness.



**8x16 Small Rectangle**  
7.87 x 15.75"  
(200 x 400mm)



**16x16 Stone**  
15.75 x 15.75"  
(400 x 400mm)



**16x24 Stone**  
15.75 x 23.62"  
(400 x 600mm)



**8x16 Small Rectangle**  
7.87 x 15.75"  
(200 x 400mm)  
**Individually  
Packaged**



**16x32 Large Rectangle**  
15.75 x 31.50"  
(400 x 800mm)  
**Individually  
Packaged**

**RANDOM BUNDLE**

All 3 stones packaged together

**Available in all colors**

**Note:** When using 16x32 Large Rectangle with other Nueva® products, please note that colors and tonal consistency may not be exact matches.

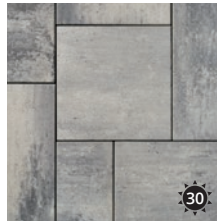
**COLORS**



CHAMPAGNE



CLOUDBURST



MARBLE GREY



MILANO



ONYX



UMBER

Learn more about  
Nueva® 80mm

Onyx and Umber available in 8x16 Small Rectangle size only. Ideal for soldier coursing or banding.



Pavers: Nueva® 80mm, Champagne with Onyx border

# Yorkville 60/80mm

Manufactured with:  


**SIZES - Available in 60mm or 80mm thickness.**



**8x16 Small Rectangle**  
7.87 x 15.75"  
(200 x 400mm)



**16x16 Stone**  
15.75 x 15.75"  
(400 x 400mm)



**16x24 Stone**  
15.75 x 23.62"  
(400 x 600mm)



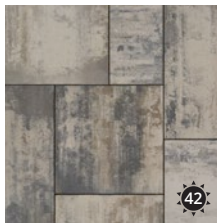
**8x16 Small Rectangle**  
7.87 x 15.75"  
(200 x 400mm)  
**Individually Packaged**

**Available in Onyx and Umber only**

**RANDOM BUNDLE**

All 3 stones packaged together

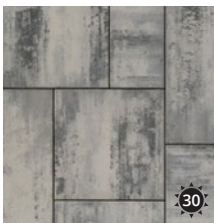
**COLORS**



CHAMPAGNE



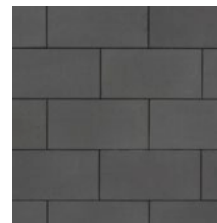
CLOUDBURST



MARBLE GREY



MILANO



ONYX



UMBER

**Learn more about  
Yorkville**



Onyx and Umber available in 8x16 Small Rectangle size only. Ideal for soldier coursing or banding.



Pavers: Yorkville 80mm, Marble Grey

# Rialto 60mm

SIZES - Available in 60mm thickness.



**Note:** When using 16x24 Stone with other sizes in the Rialto products series, please note that colors and tonal consistency may not be exact matches.

**Available in Champagne and Marble Grey**

## COLORS



Chestnut and Onyx available in 8x16 Stone size only. Ideal for soldier coursing or banding.

**Learn more about Rialto 60mm**



Slabs: Rialto 60mm, Champagne with Onyx border

# Rialto 80mm

SIZES - Available 80mm thickness.



**8x16 Stone**  
7.87 x 15.75"  
(200 x 400mm)



**16x16 Stone**  
15.75 x 15.75"  
(400 x 400mm)



**16x24 Stone**  
15.75 x 23.62"  
(400 x 600mm)



**8x16 Stone**  
7.87 x 15.75"  
(200 x 400mm)  
**Individually  
Packaged**



**16x24 Stone**  
15.75 x 23.62"  
(400 x 600mm)  
**Individually  
Packaged**

**RANDOM BUNDLE**

All 3 stones packaged together

**COLORS**



CHAMPAGNE



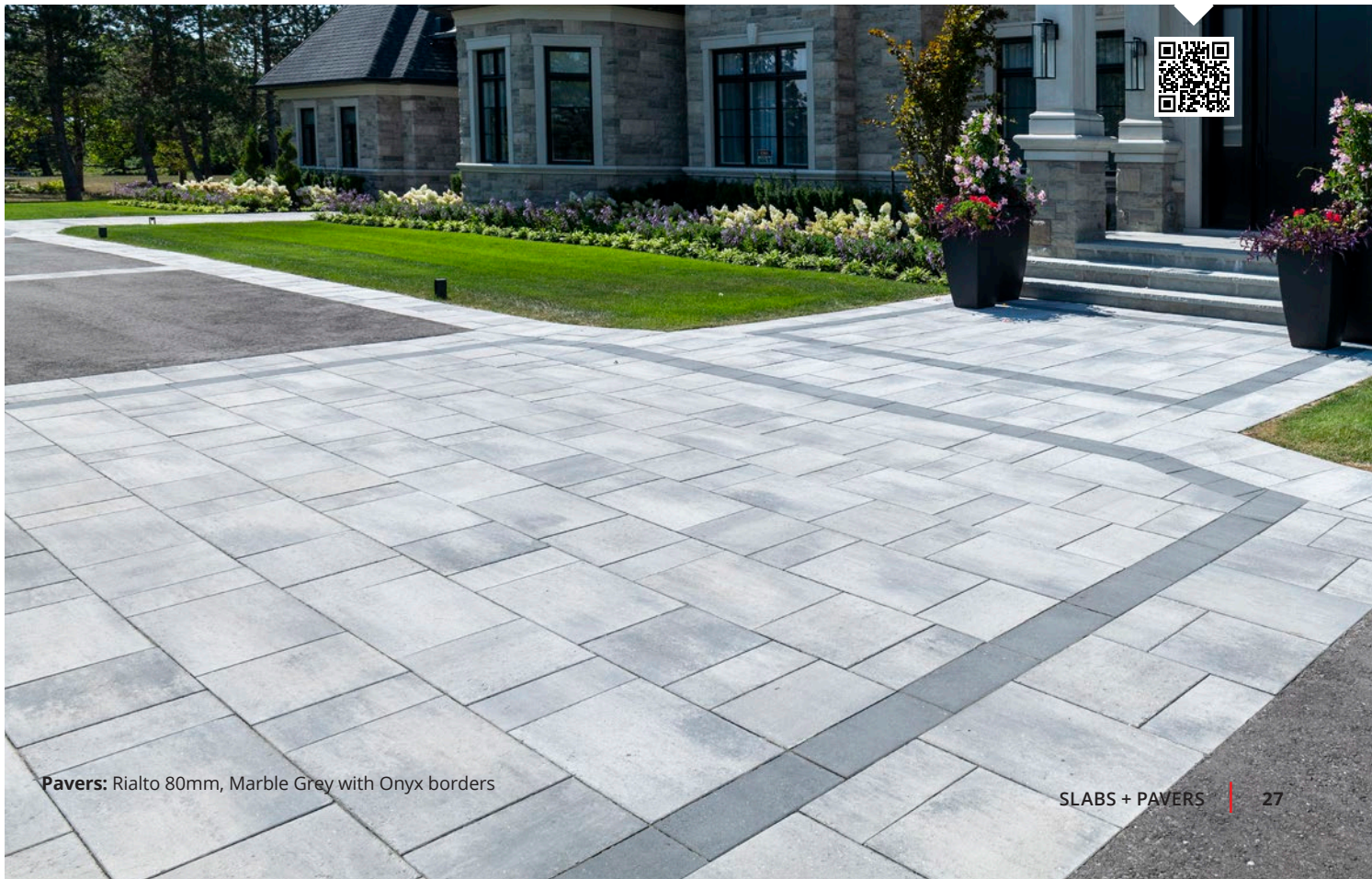
MARBLE GREY



ONYX

Onyx available in  
8x16 Stone size only.  
Ideal for soldier  
coursing or banding.

Learn more about  
Rialto 80mm



**Pavers:** Rialto 80mm, Marble Grey with Onyx borders

# Strassa 60mm



Manufactured with:



SIZE - Available in 60mm thickness only.



**6x12 Stone**  
5.91 x 11.81"  
(150 x 300mm)  
**Individually  
Packaged**

## Accenting + Patterning with Strassa

Strassa's single-size 6x12 Stone, permeable qualities and diverse colors, make it a unique product for accenting and patterning with Oaks' other 60mm slab and paver products.

### COLORS



BISCUIT



COLLEGE RED



MARBLE GREY



TWILIGHT

Learn more about  
Strassa



# Montebello 70mm

Manufactured with:  
 ELITEFINISH™

**SIZES - Available in 70mm thickness only.**



**8x12 Stone**  
7.87 x 11.81"  
(200 x 300mm)



**12x12 Stone**  
11.81 x 11.81"  
(300 x 300mm)



**12x16 Stone**  
11.81 x 15.75"  
(300 x 400mm)



**8x12 Stone**  
7.87 x 11.81"  
(200 x 300mm)

**Individually  
Packaged**

**Available in Onyx  
and Umber only**

**COMBO BUNDLE**

All 3 stones packaged together

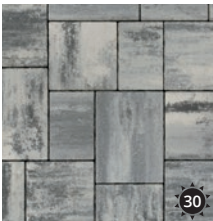
**COLORS**



CHAMPAGNE



CLOUDBURST



MARBLE GREY



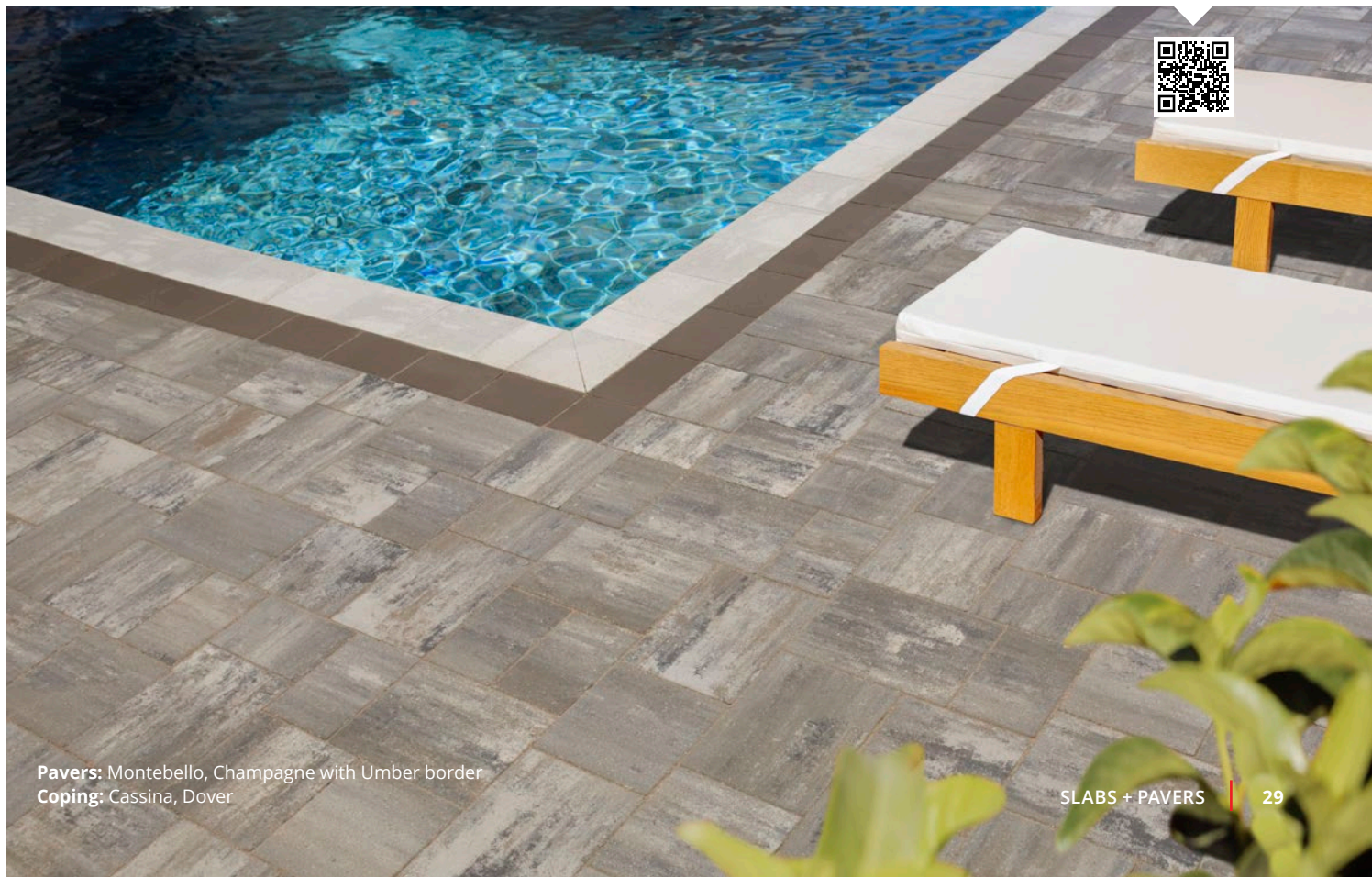
ONYX



UMBER

Onyx and Umber  
available in 8x12  
Stone size only.  
Ideal for soldier  
coursing or banding.

**Learn more about  
Montebello**



**Pavers:** Montebello, Champagne with Umber border  
**Coping:** Cassina, Dover

# Ridgefield Smooth 70mm

SIZES - Available in 70mm thickness only.



**8x12 Stone**  
7.87 x 11.81"  
(200 x 300mm)



**12x12 Stone**  
11.81 x 11.81"  
(300 x 300mm)




**12x16 Stone**  
11.81 x 15.75"  
(300 x 400mm)



**8x12 Stone**  
7.87 x 11.81"  
(200 x 300mm)  
**Individually  
Packaged**



**12x16 Stone**   
11.81 x 15.75"  
(300 x 400mm)  
**Individually  
Packaged**

**LARGE COMBO BUNDLE**  
All 3 stones packaged together

**Available in  
Chestnut  
and Onyx only**

**NOTE:** When using the 12x16 Stone with other sizes within the Ridgefield Smooth product series, please understand that colors and tonal consistency may not be exact matches.

## COLORS



CHAMPAGNE



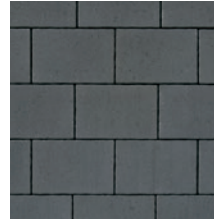
MARBLE GREY



MILANO



CHESTNUT



ONYX

Chestnut and Onyx available in 8x12 Stone size only. Ideal for soldier coursing or banding.

**Learn more about  
Ridgefield Smooth**



Pavers: Ridgefield Smooth, Marble Grey

# Ridgefield Plus 70mm

SIZES - Available in 70mm thickness only.



**8x12 Stone**  
7.87 x 11.81"  
(200 x 300mm)



**12x12 Stone**  
11.81 x 11.81"  
(300 x 300mm)



**12x16 Stone**  
11.81 x 15.75"  
(300 x 400mm)

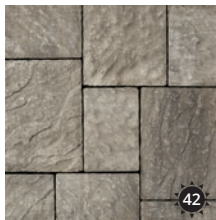


**8x12 Stone**  
7.87 x 11.81"  
(200 x 300mm)

**LARGE COMBO BUNDLE**  
All 3 stones packaged together

**Individually Packaged**  
**Available in Onyx only**

## COLORS



CHAMPAGNE



MARBLE GREY



ONYX

Onyx available in 8x12 Stone size only. Ideal for soldier coursing or banding.

Learn more about Ridgefield Plus



Pavers: Ridgefield Plus, Champagne with Ridgefield Smooth, Onyx borders

# Enviro Midori 80mm



SIZES - Available in 80mm thickness.



**5x10 Stone**  
4.72 x 9.45"  
(120 x 240mm)



**10x10 Stone**  
9.45 x 9.45"  
(240 x 240mm)



**10x15 Stone**  
9.45 x 14.17"  
(240 x 360mm)

## RANDOM BUNDLE

All 3 stones packaged together

More options  
available as  
made to order!

See page 69 for more information  
or scan the QR code below.

## COLORS



CHAMPAGNE



MARBLE GREY

Learn more about  
Enviro Midori

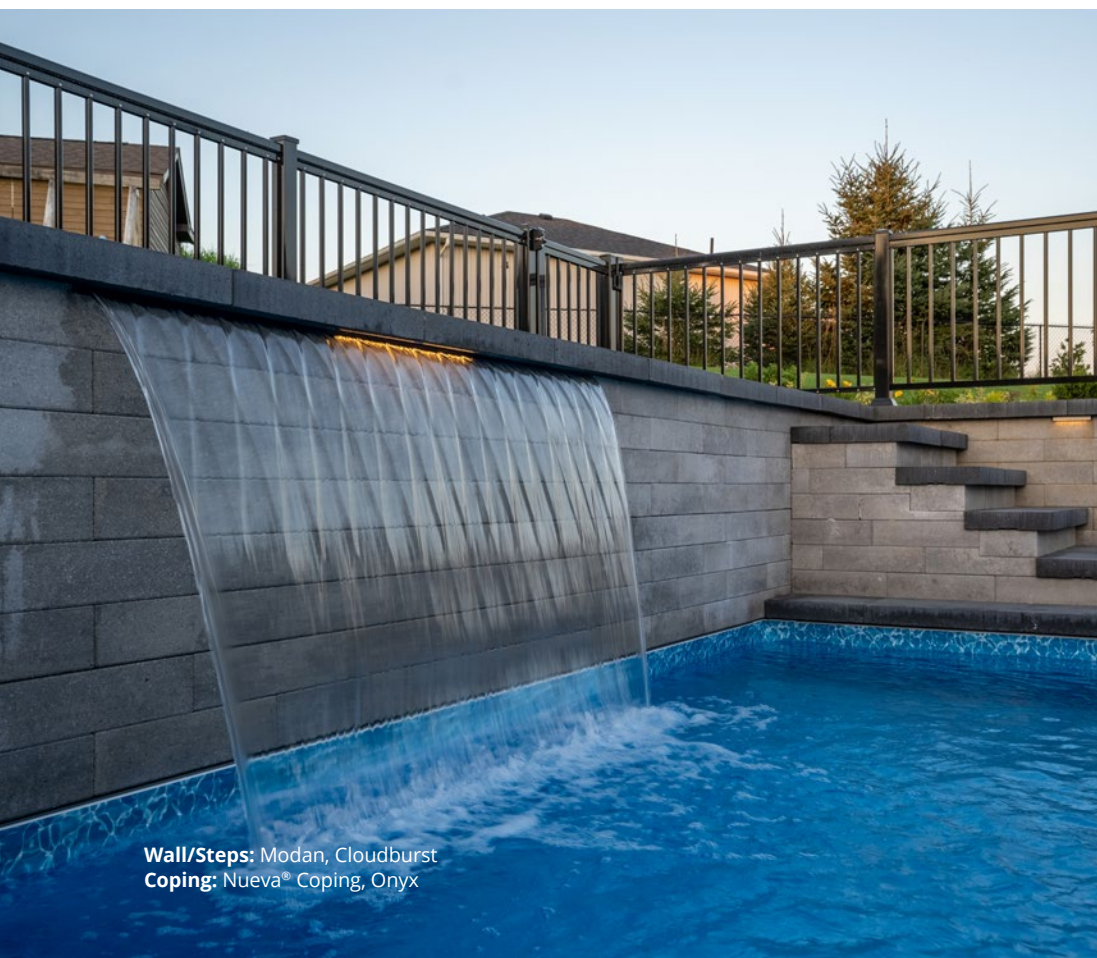


# Walls

- NEW** Ambassador Wall 34
- Gardenia Linear 35
- Laredo 36
- Laredo Smooth 37
- Modan 38
- NEW** Rialto Wall 39
- Nueva® 75 Wall 40
- Nueva® 150 Wall 41
- Ortana 42
- Proterra™ Smooth 43
- Proterra™ Split 44



**Wall:** Nueva® 150 Wall, Marble Grey with Nueva® 75 Wall, Onyx accent  
**Coping/Step Treads:** Nueva® Coping, Marble Grey  
**Slabs/Pavers:** Nueva® 60mm, Marble Grey with Classic Paver, Onyx border



**Wall/Steps:** Modan, Cloudburst  
**Coping:** Nueva® Coping, Onyx

# Ambassador Wall NEW!

For availability, please check with your local dealer, sales rep, or visit [OAKSpavers.com](http://OAKSpavers.com)

## FEATURES & BENEFITS

Versatile retaining and garden wall system compliments any landscape project

Contemporary style with 2-sided smooth face, beveled edges, and cut outs for easier handling

Faster straight wall construction, and lighter weight

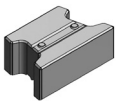
Wedge Unit can be used for straight or curved applications

Corner Unit can be used to create 24" Pillars or for half-face stagger applications

Compatible with Nueva® Coping units



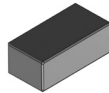
**SIZES** - Illustrations shown for representational purposes.



### Wedge Unit

9.875 x 15.75 front x 11.5 back x 5.875"  
(251 x 400 front x 292 back x 149 mm)

**Individually Packaged**



### Corner Unit

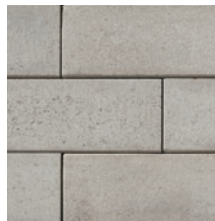
7.875 x 15.75 x 5.875"  
(200 x 400 x 149 mm)

**Individually Packaged**

**COLORS** - Nueva® 150 Wall colors shown for representational purposes.



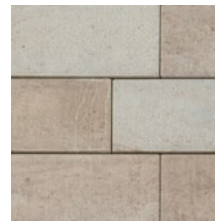
CHAMPAGNE



CLOUDBURST



MARBLE GREY

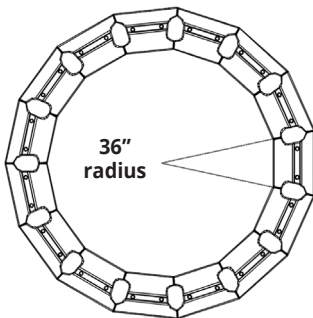


MILANO



ONYX

## APPLICATIONS



**Wedge Unit makes a  
72" diameter circle**



**Straight Applications -  
Alternating Wedge Units**

# Gardenia Linear

## SIZES



**Linear Unit**  
23.62 x 5.91 x 7.87"  
(600 x 150 x 200mm)  
**Individually  
Packaged**



**90° Corner Unit**  
11.81 x 5.91 x 7.87"  
(300 x 150 x 200mm)  
**Individually  
Packaged**

## COLORS



CHARTAN



GREYSTONE



SANDSTONE

Learn more about  
Gardenia Linear



**Wall:** Gardenia Linear, Sandstone with Modan, Milano coping  
**Slabs:** Rialto 60mm, Champagne

# Laredo

## SIZES

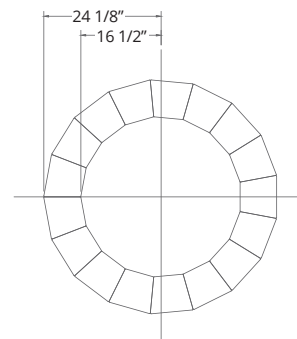


**Standard Unit**  
11.44 x 3.82 x 7.63"  
(291 x 97 x 194mm)  
**Individually  
Packaged**



**Tapered Unit**  
Outside Width 7.88 x Inside Width 6.06 x 3.82 x 7.63"  
(Outside Width 200 x Inside Width 154 x 97 x 194mm)  
**Individually  
Packaged**

**Laredo circle using  
Tapered Units**  
17 units required  
for full circle.



## COLORS



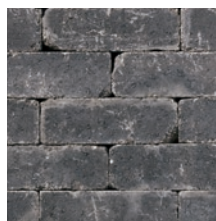
CHAMPAGNE



CHARTAN



GREYSTONE



ONYX



SANDALWOOD

Learn more about  
Laredo



**Walls:** Laredo, Greystone with Onyx accent  
**Coping:** Nueva® Wall Coping, Cloudburst

# Laredo Smooth

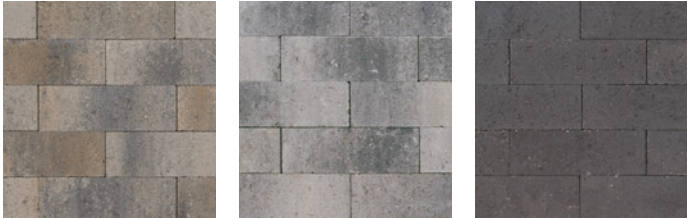
## SIZE



**Standard Unit**  
11.44 x 3.82 x 7.63"  
(291 x 97 x 194mm)  
**Individually  
Packaged**

\*Concrete adhesive is required between rows for optimum stability.

## COLORS



CHAMPAGNE

MARBLE GREY

ONYX

Learn more about  
Laredo Smooth



**Pillars:** Laredo Smooth, Marble Grey with Onyx accent band  
**Wall:** Nueva® 150 Marble Grey with Laredo Smooth, Onyx accent and Nueva® Coping, Marble Grey

# Modan

## SIZES

**Matching Coping Units Available!**

See Modan Coping page 54



**330 Unit**  
12.99 x 4.33 x 8.66"  
(330 x 110 x 220mm)



**440 Unit**  
17.32 x 4.33 x 8.66"  
(440 x 110 x 220mm)



**550 Unit**  
21.65 x 4.33 x 8.66"  
(550 x 110 x 220mm)



**660 Unit**  
25.98 x 4.33 x 8.66"  
(660 x 110 x 220mm)



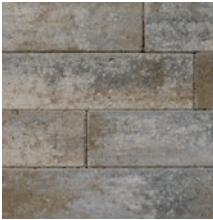
**Linear Unit**  
17.32 x 4.33 x 8.66"  
(440 x 110 x 220mm)  
**Individually Packaged**

### COMBO BUNDLE

All 4 units are packaged together

\*Concrete adhesive is required between rows for optimum stability.

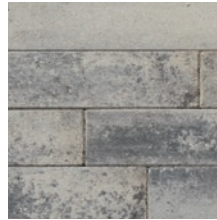
## COLORS



CHAMPAGNE



CLOUDBURST



MARBLE GREY



MILANO



TWILIGHT

Learn more about Modan



**Kitchen:** Modan, Twilight with Cloudburst accent  
**Step/Coping:** Oasis, Cloudburst

# Rialto Wall **NEW!**

## SIZES



**16" Unit**  
15.75 x 5.91 x 11.81"  
(400 x 150 x 300mm)



**20" Unit**  
19.69 x 5.91 x 11.81"  
(500 x 150 x 300mm)



**24" Unit**  
23.62 x 5.91 x 11.81"  
(600 x 150 x 300mm)



**Corner/Column Unit**  
7.87 x 5.91 x 11.81"  
(200 x 150 x 300mm)

**Individually  
Packaged**

**Makes a  
19 5/8 x 19 5/8"  
(500 x 500mm)  
square column!**

### COMBO BUNDLE

All 3 units are packaged together

## COLORS



CHAMPAGNE



CLOUDBURST



MARBLE GREY



ONYX

Onyx Available  
in Corner/Column  
Unit only.



Wall: Rialto Wall, Marble Grey  
Coping: Nueva® Coping, Cloudburst

# Nueva® 75 Wall

## SIZES



**16" Unit**  
15.75 x 2.95 x 11.81"  
(400 x 75 x 300mm)



**20" Unit**  
19.69 x 2.95 x 11.81"  
(500 x 75 x 300mm)



**20" Corner/End Unit**  
19.69 x 2.95 x 11.81"  
(500 x 75 x 300mm)



**24" Unit**  
23.62 x 2.95 x 11.81"  
(600 x 75 x 300mm)

**Matching Coping Units Available!**

See Nueva® Coping page 52

## COMBO BUNDLE

All 4 units are packaged together

## COLORS



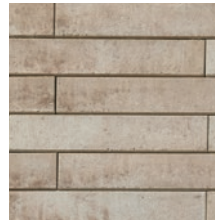
CHAMPAGNE



CLOUDBURST



MARBLE GREY

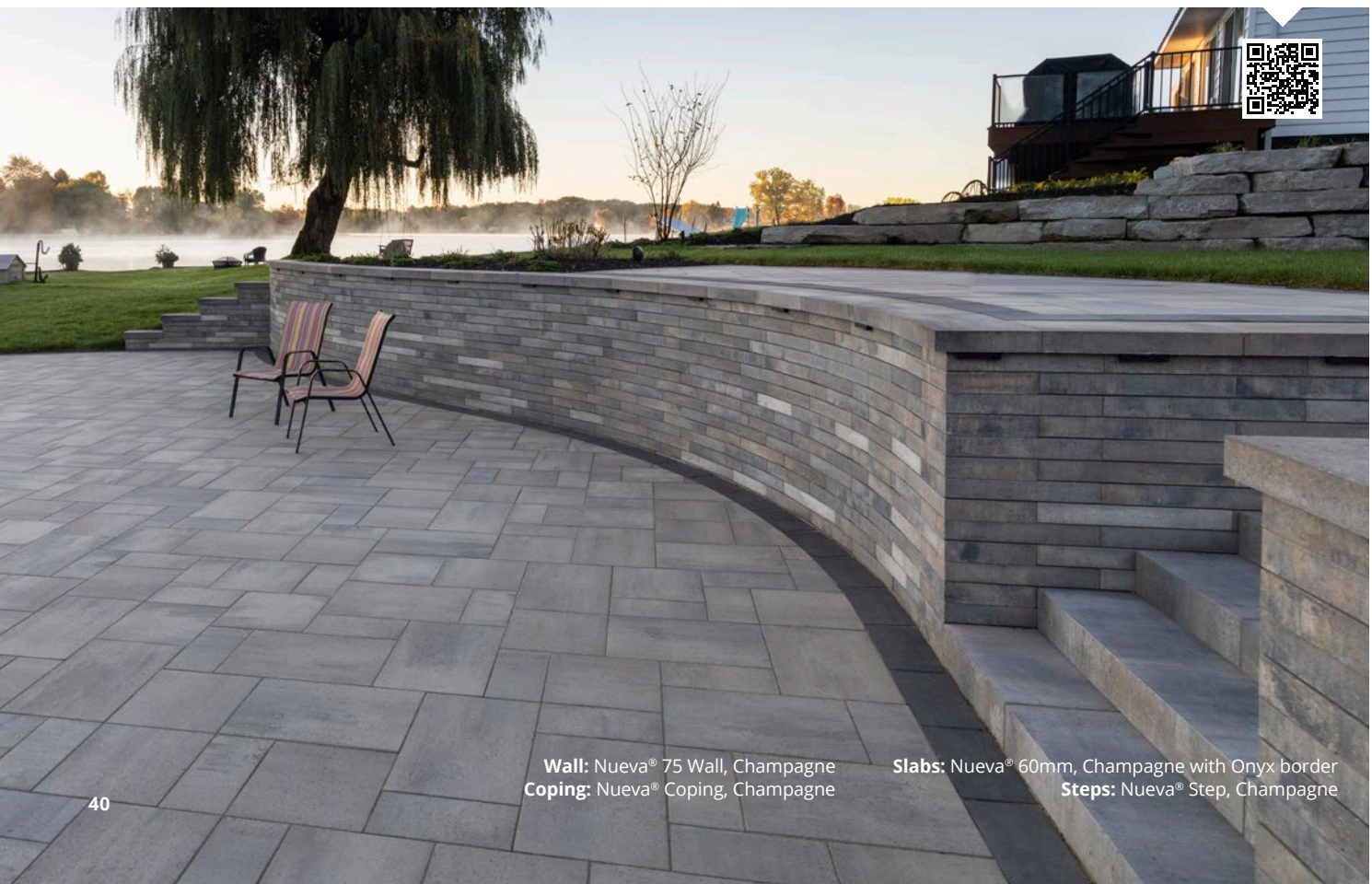


MILANO



ONYX

Learn more about  
Nueva® 75 Wall



**Wall:** Nueva® 75 Wall, Champagne  
**Coping:** Nueva® Coping, Champagne

**Slabs:** Nueva® 60mm, Champagne with Onyx border  
**Steps:** Nueva® Step, Champagne

# Nueva® 150 Wall

## SIZES



**16" Unit**  
15.75 x 5.91 x 11.81"  
(400 x 150 x 300mm)



**20" Unit**  
19.69 x 5.91 x 11.81"  
(500 x 150 x 300mm)



**20" Corner/End Unit**  
19.69 x 5.91 x 11.81"  
(500 x 150 x 300mm)



**24" Unit**  
23.62 x 5.91 x 11.81"  
(600 x 150 x 300mm)



**Corner/Column Unit**  
7.87 x 5.91 x 11.81"  
(200 x 150 x 300mm)

**Individually  
Packaged**

**Makes a  
19 5/8 x 19 5/8"  
(500 x 500mm)  
square column!**

### COMBO BUNDLE

All 4 units are packaged together

**Matching Coping Units Available!**

See Nueva® Coping page 52

## COLORS



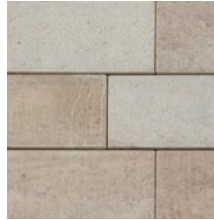
CHAMPAGNE



CLOUDBURST



MARBLE GREY

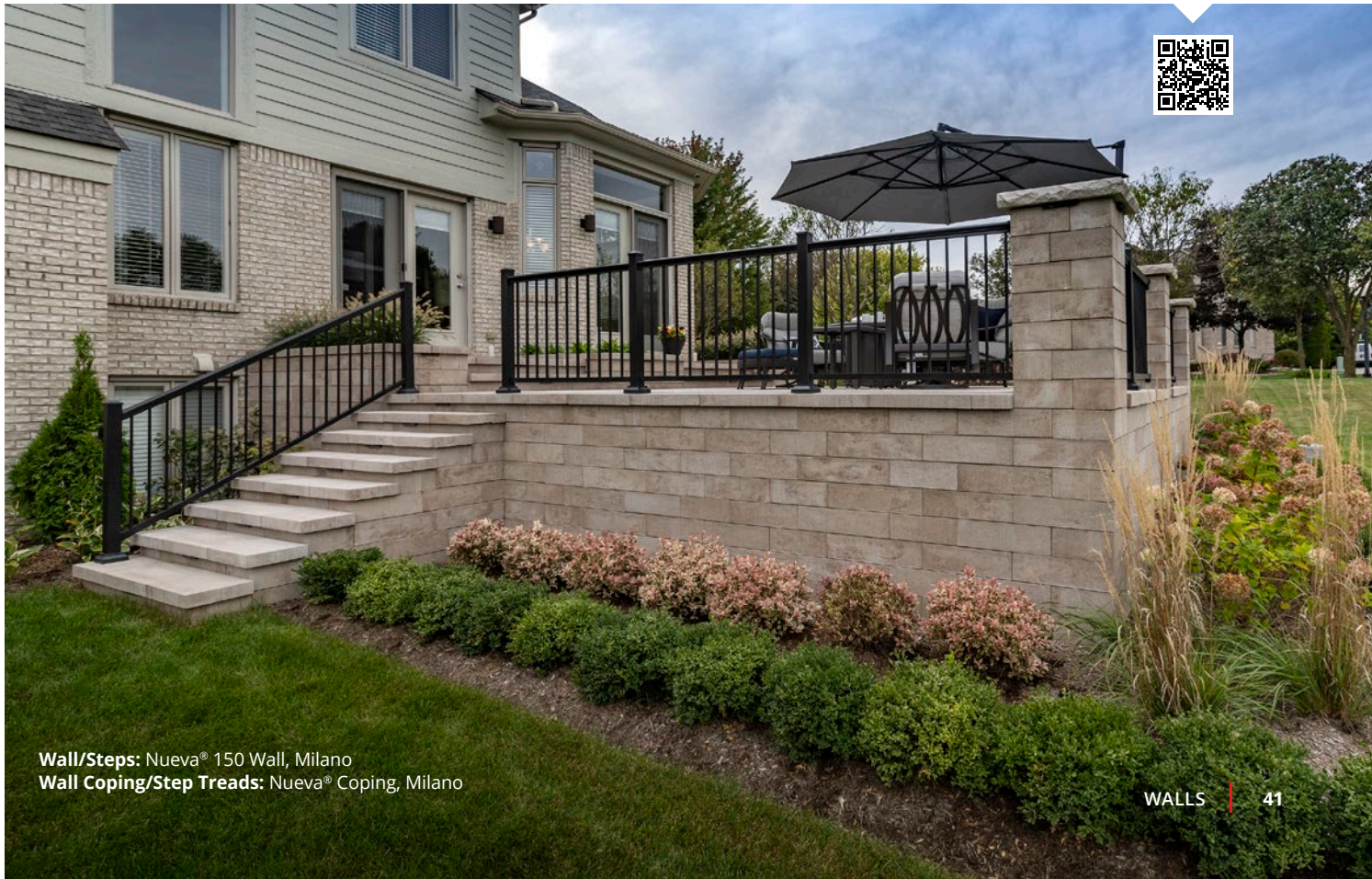


MILANO



ONYX

Learn more about  
Nueva® 150 Wall



**Wall/Steps:** Nueva® 150 Wall, Milano  
**Wall Coping/Step Treads:** Nueva® Coping, Milano

# Ortana

## SIZES



**Standard Unit**  
7.87 x 5.91 x 11.81"  
(200 x 150 x 300mm)  
**Individually Packaged**



**Tapered Unit**  
Front Width 7.87 x Back Width 5.91 x 5.91 x 11.81"  
(Front Width 200 x Back Width 150 x 150 x 300mm)  
**Individually Packaged**



**90° Corner Unit**  
11.81 x 5.91 x 7.87"  
(300 x 150 x 200mm)  
**Individually Packaged**

For right and left corner info, consult the Ortana product sheet available on our website.



**1' Split-Face Coping Unit**  
11.81 x 2.95 x 11.81"  
(300 x 75 x 300mm)  
**Individually Packaged**  
**Not available in Onyx**



**2' Split-Face Coping Unit**  
24.02 x 2.95 x 11.81"  
(610 x 75 x 300mm)  
**Individually Packaged**

## COLORS



CHAMPAGNE



DESERT



MARBLE GREY



ONYX

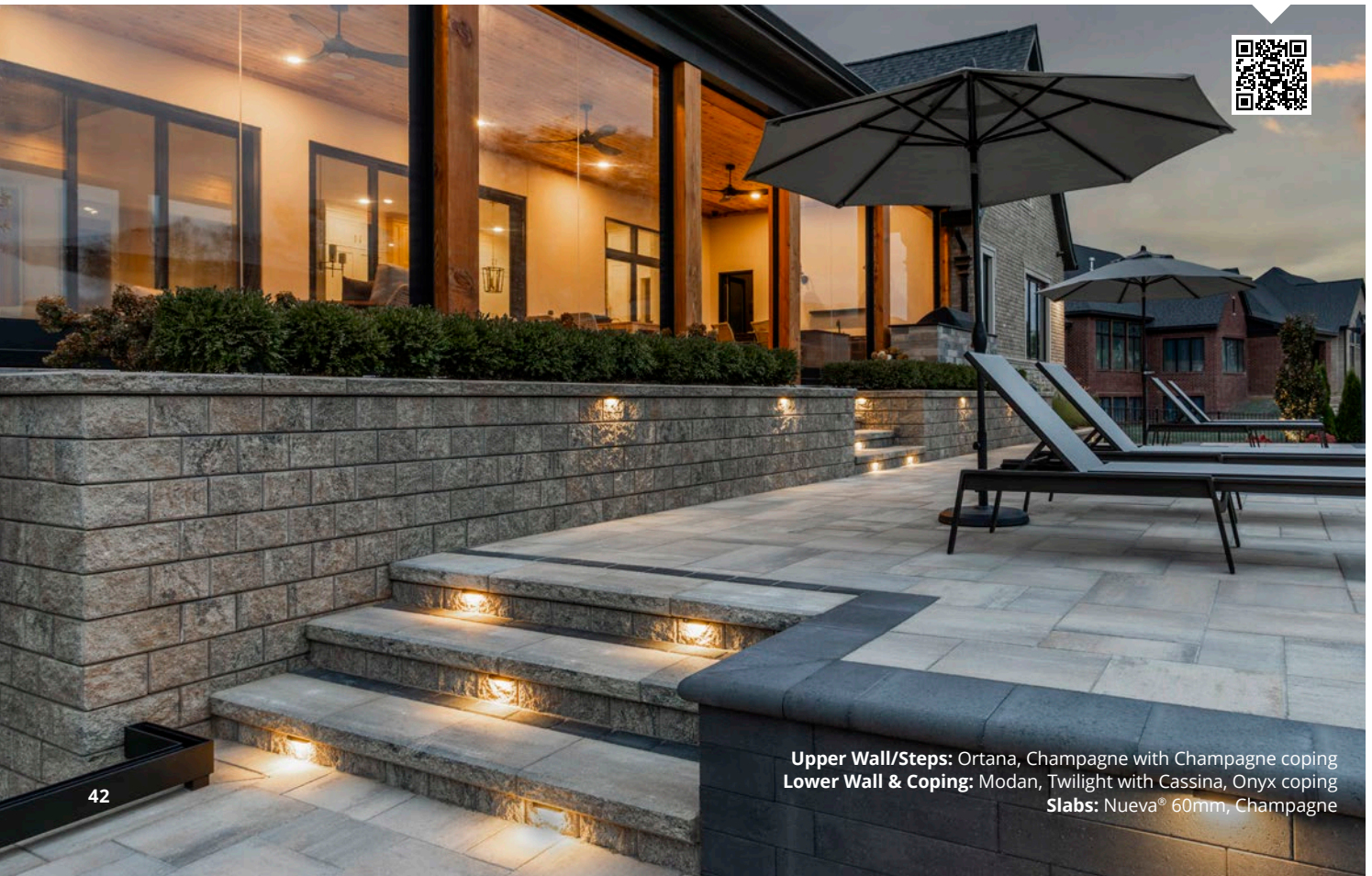


SANDALWOOD



TIMBERWOOD

Learn more about Ortana



**Upper Wall/Steps:** Ortana, Champagne with Champagne coping  
**Lower Wall & Coping:** Modan, Twilight with Cassina, Onyx coping  
**Slabs:** Nueva® 60mm, Champagne

# Proterra™ Smooth

## SIZES



**Standard Unit**  
39.37 x 7.28 x 14.76"  
(1000 x 185 x 375mm)  
Smooth on both faces  
**Individually Packaged**



**Double Unit**  
39.37 x 7.28 x 29.52"  
(1000 x 185 x 750mm)  
Smooth on one face,  
Split on one face  
**Packaged with  
Standard Unit**



**Triple Unit**  
39.37 x 7.28 x 44.29"  
(1000 x 185 x 1125mm)  
Smooth on both faces  
**Individually Packaged**



**Standard Corner Unit**  
39.37 x 7.28 x 14.76"  
(1000 x 185 x 375mm)  
Smooth on both faces  
and closed end  
**Individually Packaged**



**Coping Corner/End Unit**  
39.37 x 7.28 x 16.92"  
(1000 x 185 x 430mm)  
Smooth on both faces  
and closed end  
**Individually Packaged**



**Coping-Step Unit**  
39.37 x 7.28 x 16.92"  
(1000 x 185 x 430mm)  
Smooth on both faces  
**Individually Packaged**

## COLORS



GREYFIELD



NATURAL

### Notes:

Colored wall units also available as custom order. Minimum quantities apply.

For right and left corner info, consult the Proterra™ Smooth product sheet available on our website.

**Learn more about  
Proterra™ Smooth**



Walls/Coping/Steps: Proterra™ Smooth, Natural

# Proterra™ Split

## SIZES



**Standard Unit**  
39.37 x 7.28 x 14.76"  
(1000 x 185 x 375mm)  
Two units Split on one face,  
Smooth on one face  
One unit Split on both faces  
**Individually Packaged**



**Double Unit**  
39.37 x 7.28 x 29.52"  
(1000 x 185 x 750mm)  
Split on one face,  
Smooth on one face  
**Packaged with  
Standard Unit**



**Standard Corner Unit**  
34.44 x 7.28 x 14.76"  
(875 x 185 x 375mm)  
Split on front face and  
closed end  
**Individually Packaged**



**Coping Corner/End Unit**  
34.44 x 7.28 x 16.92"  
(875 x 185 x 430mm)  
Split on front face and  
closed end  
**Individually Packaged**



**Coping-Step Unit**  
39.37 x 7.28 x 16.92"  
(1000 x 185 x 430mm)  
Split on one face,  
Smooth on one face  
**Individually Packaged**

## COLORS



GREYFIELD



NATURAL

### Notes:

Colored wall units also available as custom order. Minimum quantities apply.  
For right and left corner info, consult the Proterra™ Split product sheet available on our website.

Learn more about  
Proterra™ Split



Wall/Coping: Proterra™ Split, Greyfield



# Steps + Curbs

Nueva® Step 46

**NEW** Rialto Step 47

Fronterra Curb 48

Nueva® Curb 49

**Steps:** Nueva® Step, Cloudburst  
**Walls:** Nueva® 150 Wall, Cloudburst

**Coping:** Nueva® Coping, Cloudburst  
**Slabs:** Nueva® 60mm, Cloudburst

# Nueva® Step

## SIZES



**150 Step Unit**  
47.24 x 5.91 x 15.75"  
(1200 x 150 x 400mm)  
**Individually Packaged**

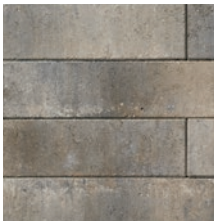


**180 Step Unit**  
47.24 x 7.09 x 15.75"  
(1200 x 180 x 400mm)  
**Individually Packaged**

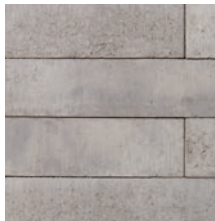
### COMING SOON

For availability, please check with your local dealer, sales rep, or visit [OAKSpavers.com](http://OAKSpavers.com)

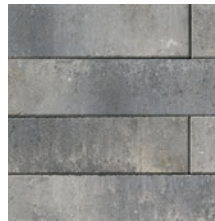
## COLORS



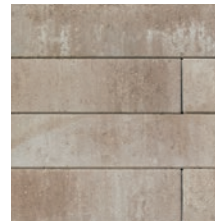
CHAMPAGNE



CLOUDBURST



MARBLE GREY



MILANO



ONYX

Learn more about  
Nueva® Step



# Rialto Step NEW!

## SIZE



**Step Unit**  
47.24 X 5.91 X 15.75"  
(1200 X 150 X 400mm)  
**Individually Packaged**

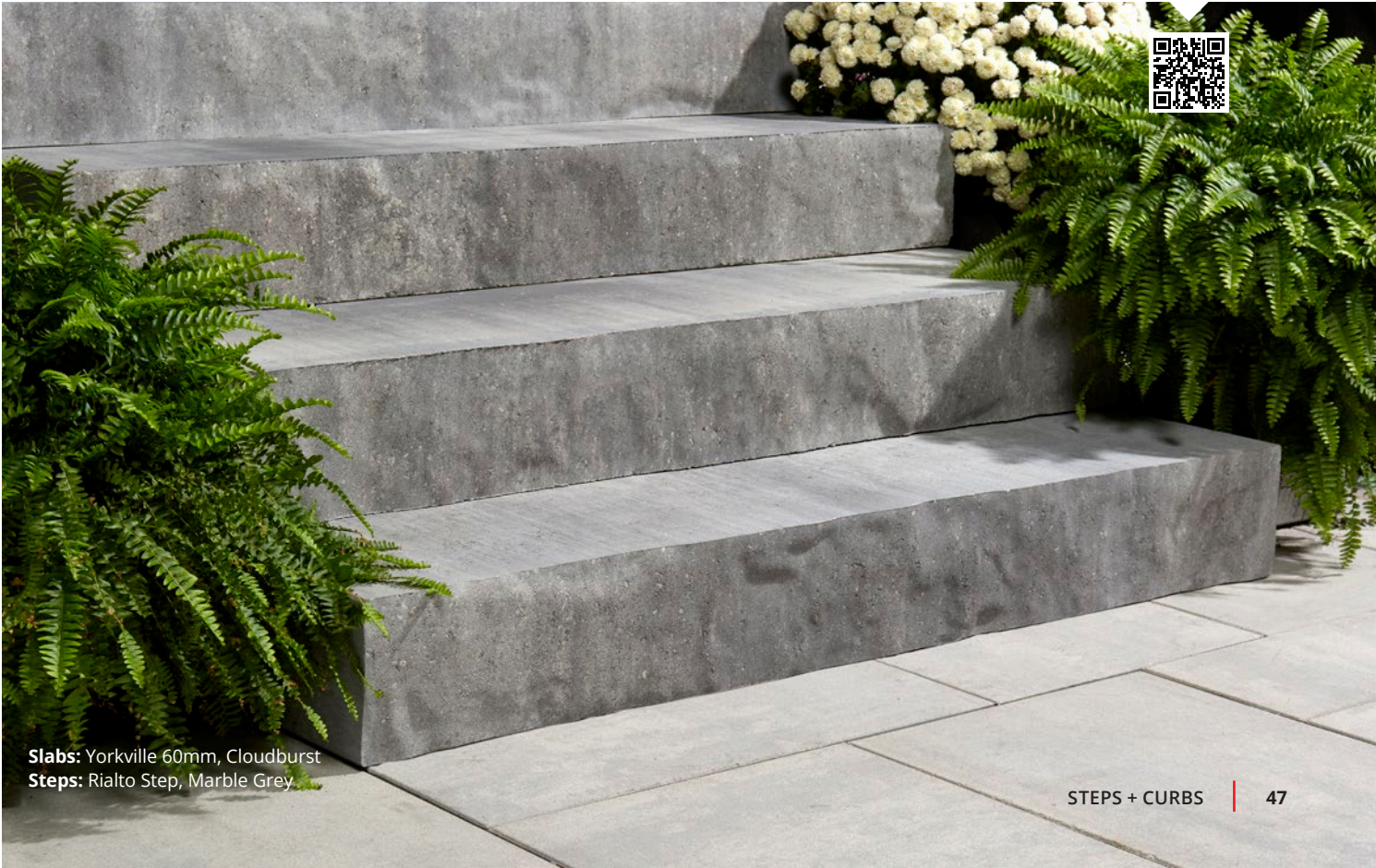
Embossed face,  
smooth top and sides

## COLORS



CHAMPAGNE      CLOUDBURST      MARBLE GREY      ONYX

Learn more about  
Rialto Step



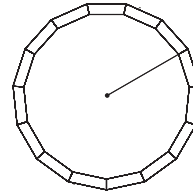
**Slabs:** Yorkville 60mm, Cloudburst  
**Steps:** Rialto Step, Marble Grey

# Fronterra Curb

## SIZE



Outside Width 14.6 x Inside Width 13 x 5.9 x 3.9"  
(Outside Width 372 x Inside Width 330 x 150 x 100mm)  
**Individually Packaged**



### Circle

15 pieces make a 1.8m (71")  
outside diameter circle.

## COLORS



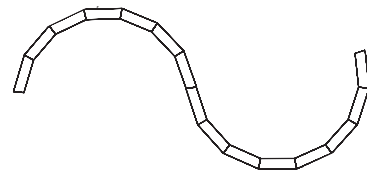
CHARTAN



GREYSTONE



ONYX



### Serpentine

To achieve larger radius applications,  
gap the inside (backside) of the curb unit  
accordingly.

Learn more about  
Fronterra Curb



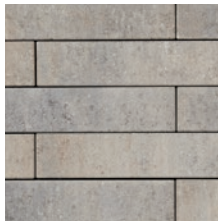
# Nueva® Curb

## SIZE

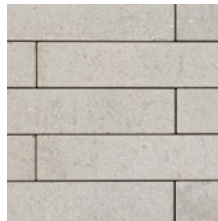


**Curb Unit**  
23.6 x 4.9 x 3.9"  
(600 x 125 x 100mm)  
**Individually Packaged**

## COLORS



CHAMPAGNE



CLOUDBURST



MARBLE GREY



MILANO



ONYX

Learn more about  
Nueva® Curb

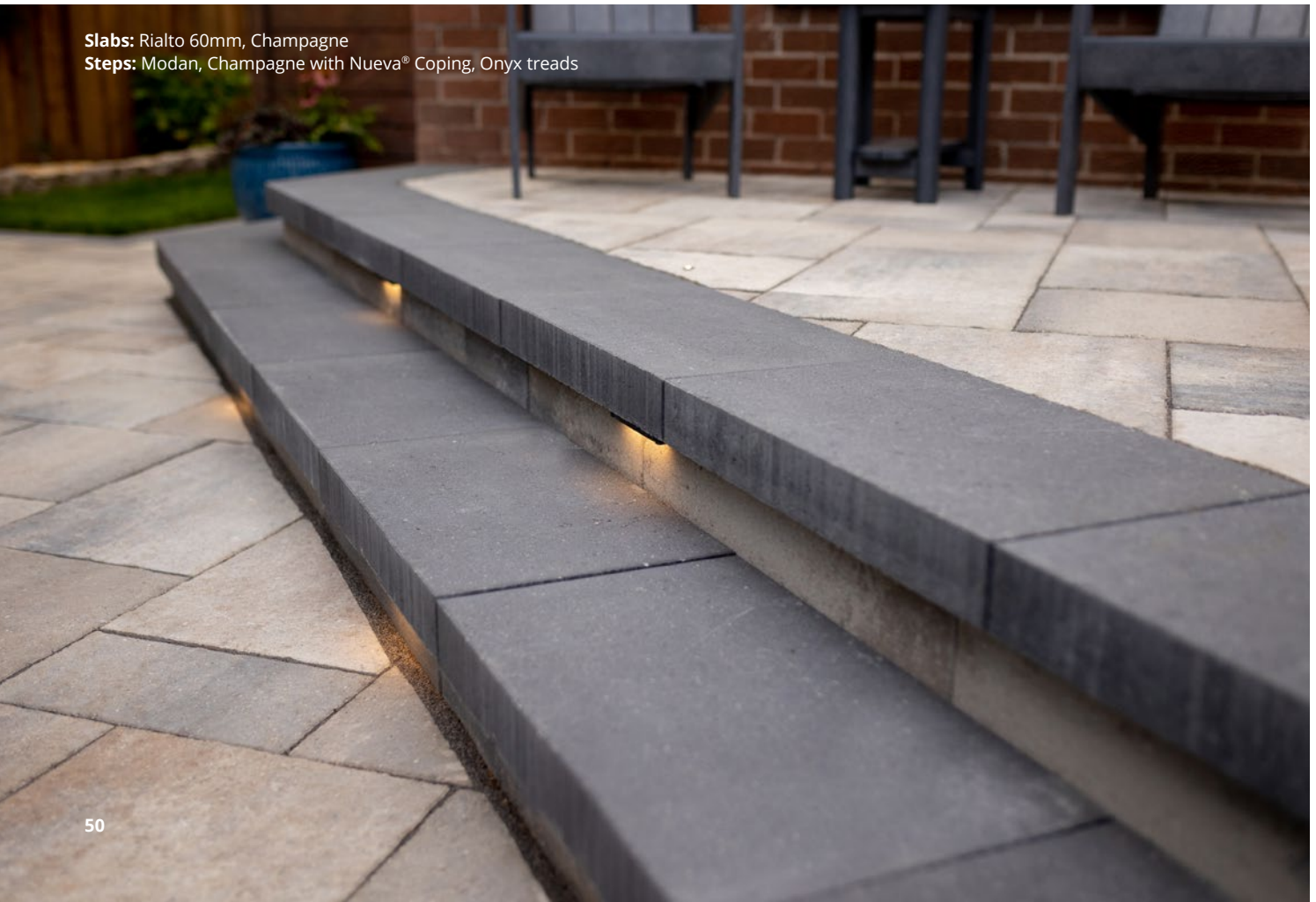


**Curb:** Nueva® Curb, Onyx  
**Slabs:** Nueva® XL Slab, Cloudburst

**Slabs:** Nueva® XL Slab, Cloudburst  
**Pool Coping:** Oasis, Cloudburst  
**Wall/Steps:** Modan, Cloudburst with Oasis, Cloudburst coping



**Slabs:** Rialto 60mm, Champagne  
**Steps:** Modan, Champagne with Nueva® Coping, Onyx treads



# Copings + Caps

Nueva® Coping 52

**NEW** Nueva® Elite Coping 53

**NEW** Modan Coping 54

Oasis 55

Cassina 56

Nueva® Pillar Cap 56

**Pavers:** Yorkville 80mm, Marble Grey

**Wall:** Nueva® 150 Wall, Cloudburst with Nueva® Coping, Cloudburst

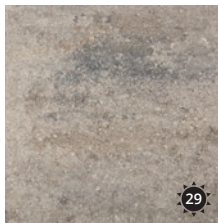
# Nueva® Coping 75mm

## SIZE



**Coping Unit**  
23.62 x 2.95 x 13.38"  
(600 x 75 x 340mm)  
**Packaged with**  
**End Coping Units**

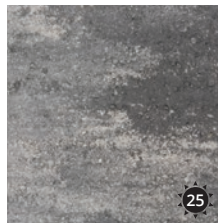
## COLORS



CHAMPAGNE



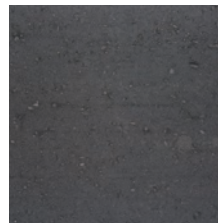
CLOUDBURST



MARBLE GREY



MILANO



ONYX

Learn more about  
Nueva® Coping



**Slab:** Nueva® XL Slab, Champagne  
**Coping:** Nueva® Coping, Champagne

# Nueva® Elite Coping 75mm **NEW!**

Manufactured with:  
 **ELITEFINISH™**

## SIZE



**Coping Unit**  
23.62 x 2.95 x 13.38"  
(600 x 75 x 340mm)  
**Packaged with**  
**End Coping Units**

## COLORS



DOVER



ONYX



UMBER

### **ELITEFINISH™**

Delivers richer, more vibrant color with a harder-wearing, more durable surface and a smoother texture.



# Modan Coping 60mm **NEW!**

## SIZE



**12" Coping Stone**  
23.62 x 2.36 x 12"  
(600 x 60 x 305mm)  
**Individually Packaged**

## Compatible + Versatile

Modan Coping works with more than just Modan Wall. It pairs seamlessly with Gardenia Linear, Laredo, or Nueva® 150 Wall Corner/Column units when used as a garden wall.

Its narrower 12" depth provides the ideal overhang for 8" or 10" garden walls, and can also be used as a shorter step tread.

## COLORS



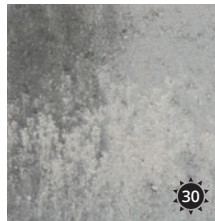
CHAMPAGNE

42



CLOUDBURST

29



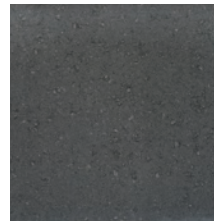
MARBLE GREY

30



MILANO

34



TWILIGHT

**Learn more about  
Modan Coping**

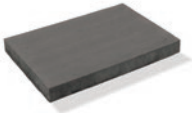


Wall: Modan, Cloudburst  
Coping: Modan Coping, Cloudburst

Pavers: Montebello, Marble Grey

# Oasis 60mm

## SIZE

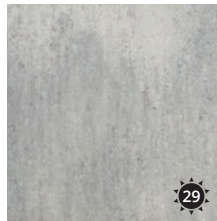


**Coping Stone**  
24 x 2.36 x 14.125"  
(610 x 60 X 360mm)  
**Individually Packaged**

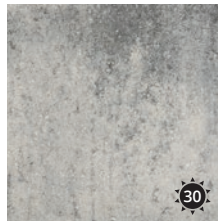
## COLORS



CHAMPAGNE



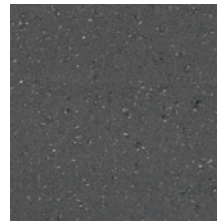
CLOUDBURST



MARBLE GREY



MILANO



ONYX

Learn more about  
Oasis



**Coping:** Oasis, Milano  
**Slabs:** Yorkville 60mm, Milano

# Cassina 70mm

## SIZE

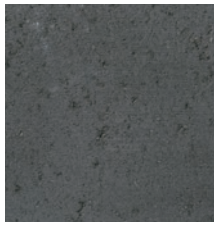


**12" Coping Stone**  
12 x 2.36 x 12"  
(305 x 60 x 305mm)  
**Individually Packaged**

## COLORS

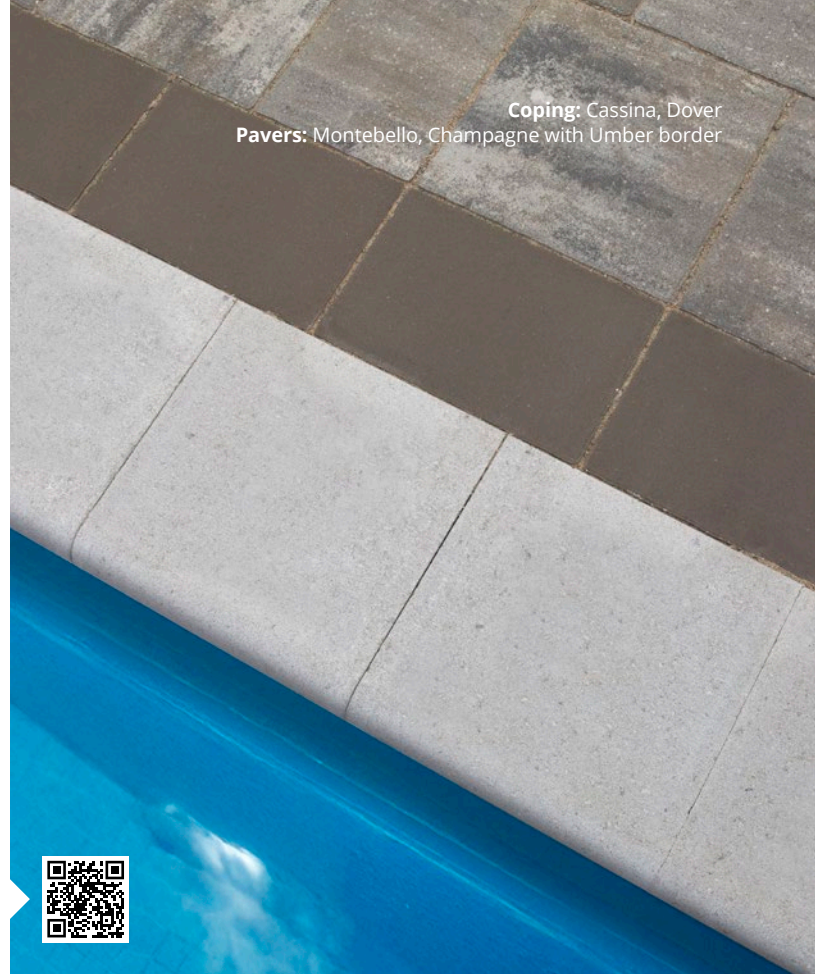


DOVER



ONYX

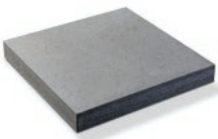
Learn more about Cassina



**Coping:** Cassina, Dover  
**Pavers:** Montebello, Champagne with Umber border

# Nueva® Pillar Cap

## SIZE



**24x24 Pillar Cap**  
23.25 x 2.95 x 23.25"  
(590 x 75 x 590mm)  
**Individually Packaged**

## Pairs well with:

- Nueva® 75 & 150 Walls
- Gardenia Linear
- Laredo
- Ortana
- Rialto Wall

## COLORS



DOVER



ONYX

Learn more about Nueva® Pillar Cap



**Pillar Cap:** Nueva® Pillar Cap, Onyx  
**Wall:** Nueva® 150, Marble Grey with Nueva® Coping, Onyx  
**Pavers:** Classic Paver, Marble Grey and Onyx



## Online Resources

Visit the 'Resource' section of our website for more product information, planning tools and specification guides. **Scan to view!**

# Planning + Specifications

Recommended Uses **58**

Laying Patterns **60**

1ONE Sand **61**

Packaging Specifications **62**

Online Tools + Resources **66**

ICI Landscape Products **68**

Made to order Products **69**

**Slabs:** Nueva® XL Slab, Cloudburst

SLAB & PAVER RECOMMENDED USES (RESIDENTIAL)

# Product Matrix



PRODUCT	THICKNESS	SIZES	POOL DECK	PATIO/ WALKWAY	DRIVEWAY	PERMEABLE	EliteFinish™	ColorBold™
Bonaire	60mm	4x4 Stone	✓	✓	✓		✓	✓
		Combo Bundle	✓	✓	✓			
Colonnade	60mm	6x9 Stone	✓	✓	✓			
		9x9 Stone	✓	✓	✓			
		9x12 Stone	✓	✓	✓			
		Random Bundle	✓	✓				
Classic Paver	60mm	Standard Bundle	✓	✓	✓			
Everton	60mm	Random Bundle	✓	✓	✓			
Market Paver	60mm	4x8 Stone	✓	✓	✓		✓	✓
		6x12 Stone	✓	✓	✓		✓	✓
Molina®	60mm	12x24 Stone	✓	✓			✓	✓
		24x24 Stone	✓	✓			✓	✓
		Random Bundle	✓	✓				
Nueva®	60mm	8x16 Small Rectangle	✓	✓				
		12x24 Rectangle	✓	✓				
		16x32 Large Rectangle	✓	✓				
		Random Bundle	✓	✓				
Nueva® XL Slab	60mm	24x36 Stone	✓	✓				
		Random Bundle	✓	✓				
Rialto	60mm	8x16 Stone	✓	✓				
		16x24 Stone	✓	✓				
Strassa	60mm	6x12 Stone	✓	✓	✓	✓	✓	✓
Yorkville	60mm	Random Bundle	✓	✓			✓	
		8x16 Small Rectangle	✓	✓			✓	
Montebello	70mm	Combo Bundle	✓	✓	✓		✓	
		8x12 Stone	✓	✓	✓		✓	
Ridgefield Plus	70mm	Large Combo Bundle	✓	✓	✓			
		8x12 Stone	✓	✓	✓			
Ridgefield Smooth 70mm	70mm	Large Combo Bundle	✓	✓	✓			
		8x12 Stone	✓	✓	✓			
		12x16 Stone	✓	✓	✓			
Enviro Midori	80mm	Random Bundle		✓	✓	✓		
Market Paver	80mm	4x8 Stone		✓	✓		✓	✓
		Combo Bundle		✓	✓		✓	✓
Molina®	80mm	6x12 Stone		✓	✓		✓	✓
		12x24 Stone		✓	✓		✓	✓
		Random Bundle		✓	✓			
Nueva®	80mm	8x16 Small Rectangle		✓	✓			
		16x32 Large Rectangle		✓				
		Random Bundle		✓	✓			
Rialto	80mm	Random Bundle		✓	✓			
		8x16 Stone		✓	✓			
		16x24 Stone		✓	✓			
Yorkville	80mm	Random Bundle		✓	✓		✓	
		8x16 Small Rectangle		✓	✓		✓	

**NOTE:** Thicker units can be used for pool deck and patio/walkway applications. Our recommendations are based on the availability of thinner alternatives.

WALL FEATURES & RECOMMENDED USES

# Product Matrix

PRODUCT	SIZES	RECOMMENDED USES					FUNCTIONAL FEATURES			
		GARDEN WALL	RETAINING WALL	CURB	PILLAR	TREE RING	FEATURE*	DOUBLE-SIDED	BUILT-IN INTERLOCK	CORED
<b>Ambassador Wall</b>	Wedge Unit	✓	✓			✓	✓	✓	✓	
	Corner	✓			✓		✓	✓		
<b>Gardenia Linear</b>	Linear Unit	✓		✓					✓	
<b>Laredo</b>	Standard Unit	✓		✓	✓		✓	✓		
	Tapered Unit	✓				✓	✓	✓		
<b>Laredo Smooth</b>	Standard Unit	✓		✓	✓		✓	✓		
<b>Modan</b>	Combo Bundle	✓		✓			✓			
	Linear Unit	✓		✓	✓		✓			
<b>Nueva® 75 Wall</b>	Combo Bundle	✓	✓				✓	✓	✓	
<b>Nueva® 150 Wall</b>	Combo Bundle	✓	✓				✓	✓	✓	✓
	Corner/Column	✓			✓		✓	✓		
<b>Ortana</b>	Standard Unit	✓	✓		(Corner Unit)		✓	✓	✓	
	Tapered Unit	✓	✓				✓		✓	
<b>Proterra™ Smooth</b>	Standard Unit		✓					✓	✓	
	Double Unit		✓						✓	
	Triple Unit		✓							
<b>Proterra™ Split</b>	Standard Unit		✓						✓	
	Double Unit		✓						✓	
<b>Rialto Wall</b>	Combo Bundle	✓	✓				✓	✓	✓	✓
	Corner/Column	✓			✓		✓	✓		

\*Feature = Fire pit/fire table, water feature, outdoor kitchen

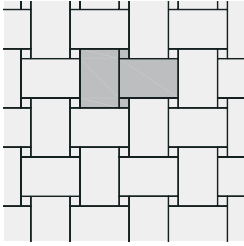
## WALL TYPE/ALIGNMENT & INSTALLATION

PRODUCT	SIZES	STRAIGHT WALL	CURVED WALL	FREE-STANDING	SINGLE-DEPTH GRAVITY	MULTI-DEPTH GRAVITY	STABILIZED BACKFILL	GEOGRID REINFORCED	MACHINE INSTALL
<b>Ambassador Wall</b>	Wedge Unit	✓	✓	✓	✓		✓	✓	
	Corner	✓		✓	✓				
<b>Gardenia Linear</b>	Linear Unit	✓			✓				
<b>Laredo</b>	Standard Unit	✓		✓	✓				
	Tapered Unit		✓	✓	✓				
<b>Laredo Smooth</b>	Standard Unit	✓		✓	✓				
<b>Modan</b>	Combo Bundle	✓			✓				
	Linear Unit	✓			✓				
<b>Nueva® 75 Wall</b>	Combo Bundle	✓		✓	✓				
<b>Nueva® 150 Wall</b>	Combo Bundle	✓		✓	✓		✓	✓	
	Corner/Column	✓		✓	✓				
<b>Ortana</b>	Standard Unit	✓		✓	✓		✓	✓	
	Tapered Unit		✓		✓		✓	✓	
<b>Proterra™ Split</b>	Standard Unit	✓		✓	✓	✓	✓	✓	✓
	Double Unit	✓		✓	✓	✓	✓	✓	✓
<b>Proterra™ Smooth</b>	Standard Unit	✓		✓	✓	✓	✓	✓	✓
	Double Unit	✓		✓	✓	✓	✓	✓	✓
	Triple Unit	✓		✓	✓		✓	✓	
<b>Rialto Wall</b>	Combo Bundle	✓		✓	✓		✓	✓	
	Corner/Column	✓		✓	✓				

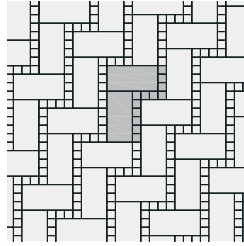
For additional technical information please visit our website or contact us.

# Laying Patterns

## BONAIRE

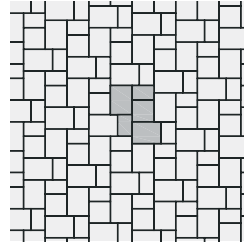


**Accent Pattern A - Basketweave**  
Bonaire 4x4 used with Rialto 60mm 16x24 Stone

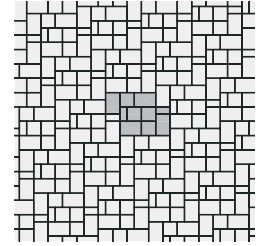


**Accent Pattern B - Herringbone**  
Bonaire 4x4 used with a Nueva® 60mm or Molina® 60mm 12x24 Stone

## COLONNADE

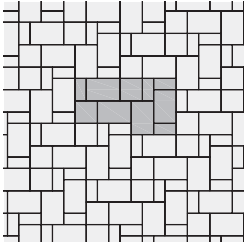


**Pattern C - Random Cluster**

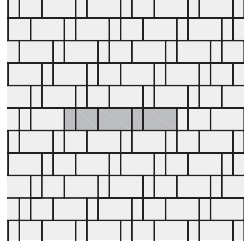


**Pattern G - Random Cluster**

## EVERTON

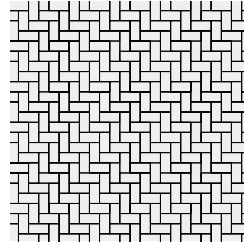


**Pattern C - L-Shape**

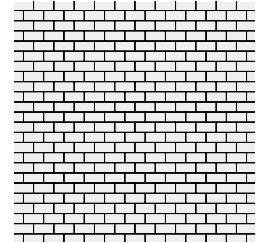


**Pattern D - Running Bond**

## CLASSIC PAVER & MARKET PAVER

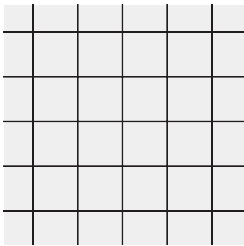


**Pattern A - Herringbone**

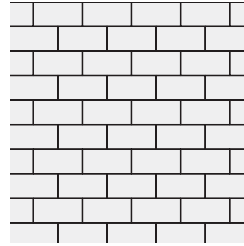


**Pattern B - Half Running Bond**

## MOLINA®

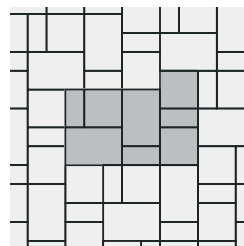


**Pattern M - Stack Bond**  
(24x24) 60mm only

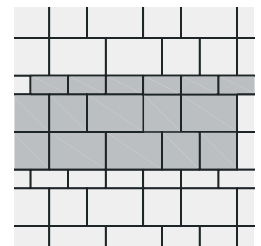


**Pattern E - Half Runningbond**  
(12x24)

## NUEVA®

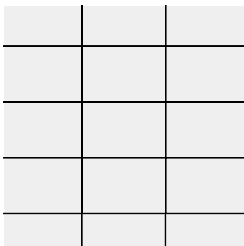


**Pattern A - L-Shape**

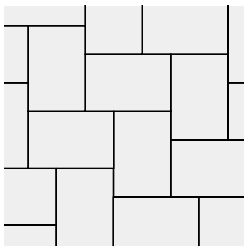


**Pattern C - Running Bond**

## NUEVA® XL SLAB

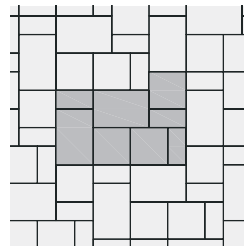


**Pattern A - Stack Bond**

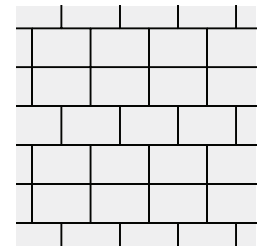


**Pattern D - Herringbone**

## RIALTO



**Pattern B - L-shape**



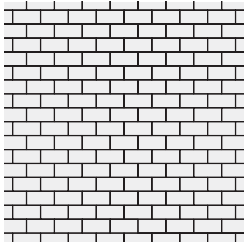
**Pattern F - Staggered Running Bond**  
(16x24)

# Laying Patterns

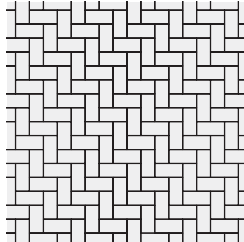
Additional laying pattern ideas are available online.



## STRASSA

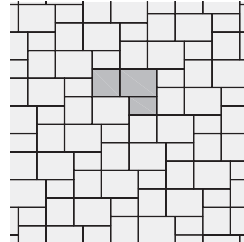


Pattern A - Half Running Bond

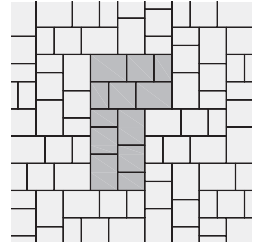


Pattern C - Herringbone

## RIDGEFIELD PLUS & RIDGEFIELD SMOOTH

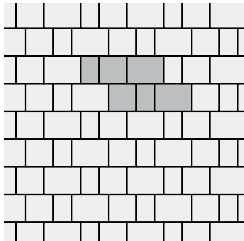


Pattern D - L-Shape

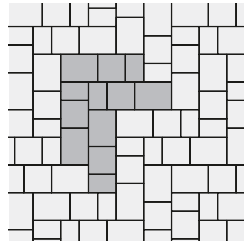


Pattern F - Herringbone

## MONTEBELLO

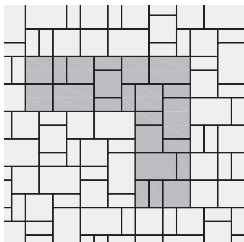


Pattern C - Running Bond

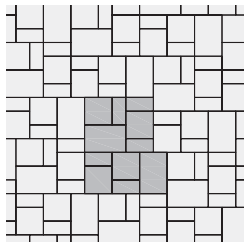


Pattern E - Herringbone

## ENVIRO MIDORI

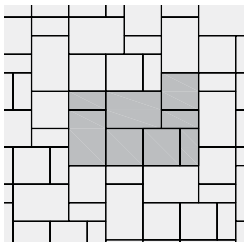


Pattern D - Herringbone

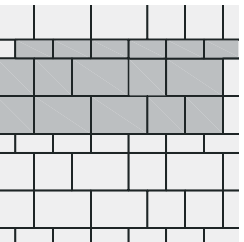


Pattern E - Cluster

## YORKVILLE



Pattern B - L-Shape



Pattern C - Running Bond

# 1ONESAND

The only polymeric sand you need.

Fast, easy setting 1ONEsand polymeric sand is a specially formulated, high-performance mix of calibrated sands, polymers, and binding agents designed to fill and firmly bind paver joints up to 4" (100mm) wide. 1ONEsand remains stable and just flexible enough, maintaining its durability and flexibility in the most extreme weather conditions.



Canvas Beige

Absolute Black

Granite Gray

Available in 3 colors!

50lb (22.7kg) bag, 63 bags/skid



More info!

## 60MM SLABS + PAVERS

# Packaging Specifications

	Per Full Bundle				Layers	Per Layer			Per Section			
	Sq. Ft.	Lin. Ft.	Pieces	Wt. (lbs)		Sq. Ft.	Pieces	Wt. (lbs)	Sections	Sq. Ft.	Pieces	Wt. (lbs)
<b>BONAIRE 60mm</b>												
4x4 Stone	64	194.9	594	1760	6 †	10.7	99	291	-	-	-	-
<b>CLASSIC PAVER 60mm</b>												
Standard Bundle (4x4, 4x8)	106	157 (Sol) 314 (Sa)	18 (4x4) 477 (4x8)	2900	9	11.8	2 (4x4) 53 (4x8)	322	6	17.7	3 (4x4) 79 (4x8)	483
<b>COLONNADE 60mm</b>												
Combo Bundle (3x6, 6x6)	104	35 (3x6) 177 (6x6)	144 (3x6) 360 (6x6)	2925	9	11.6	16 (3x6) 40 (6x6)	325	8	13	18 (3x6) 45 (6x6)	366
6x9 Stone	105	141.7 (Sol) 212.6 (Sa)	288	2826	9	11.7	32	314	8	13.1	36	353
9x9 Stone	98	132.9 (Sol)	180	2750	9	10.9	20	306	5	19.6	36	550
9x12 Stone	104	106.3 (Sol) 141.7 (Sa)	144	2936	9	11.6	16	326	4	26	36	734
<b>EVERTON 60mm</b>												
Random Bundle (5x10, 10x10, 10x15)	111.6	141.7 (Sa)	72 (5x10) 36 (10x10) 72 (10x15)	3184	9 †	12.4	8 (5x10) 4 (10x10) 8 (10x15)	354	4	27.9	18 (5x10) 9 (10x10) 18 (10x15)	796
<b>MARKET PAVER 60mm</b>												
4x8 Stone	104.6	159.4 (Sol) 318.8 (Sa)	486	3020	9 †	11.6	54	336	6	17.4	81	503
<b>MOLINA® 60mm</b>												
6x12 Stone	93	94.5 (Sol) 189 (Sa)	192	2740	8 †	11.6	24	343	4	23.3	48	685
12x24 Stone	93	47.3 (Sol) 94.5 (Sa)	48	2796	8 †	11.6	6	350	2	46.5	24	1398
24x24 Stone	77.5	39.4 (Sol)	20	2346	10 †	7.8	2	235	2	38.8	10	1173
<b>NUEVA® 60mm</b>												
Random Bundle (8x16, 16x16, 16x24)	103.4	78.7 (Sa)	24 (8x16) 24 (16x16) 16 (16x24)	2940	8 †	12.9	3 (8x16) 3 (16x16) 2 (16x24)	368	-	-	-	-
8x16 Small Rectangle	103.4	78.7 (Sol) 157.4 (Sa)	120	2912	8 †	12.9	15	364	3	34.5	40	971
12x24 Rectangle	104.6	53.2 (Sol) 106.3 (Sa)	54	3017	9 †	11.6	6	335	2	52.3	27	1509
16x32 Large Rectangle	103.7	39.4 (Sol) 78.8 (Sa)	30	2940	10 †	10.4	3	294	3	34.6	10	980
<b>NUEVA® XL 60mm</b>												
24x36 Stone	116.3	39.4 (Sol) 59.1 (Sa)	20	3200	10 †	11.6	2	320	2	58.2	10	1600
<b>RIALTO 60mm</b>												
Random Bundle (8x16, 16x16, 16x24)	103.4	78.7 (Sa)	24 (8x16) 24 (16x16) 16 (16x24)	2940	8 †	12.9	3 (8x16) 3 (16x16) 2 (16x24)	368	-	-	-	-
8x16 Stone	103.4	78.7 (Sol) 157.4 (Sa)	120	2912	8 †	12.9	15	364	3	34.5	40	971
16x24 Stone	103.4	52.5 (Sol) 78.7 (Sa)	40	2952	8 †	12.9	5	369	-	-	-	-
<b>STRASSA 60mm</b>												
6x12 Stone	104.7	106.3 (Sol) 212.6 (Sa)	216	2880	9 †	11.6	24	320	4	26.2	54	720
<b>YORKVILLE 60mm</b>												
Random Bundle (8x16, 16x16, 16x24)	103.4	78.7 (Sa)	24 (8x16) 24 (16x16) 16 (16x24)	2940	8 †	12.9	3 (8x16) 3 (16x16) 2 (16x24)	368	-	-	-	-
8x16 Small Rectangle	103.4	78.7 (Sol) 157.4 (Sa)	120	2912	8 †	12.9	15	364	3	34.5	40	971

(Sol) = Soldier, (Sa) = Sailor  
† = Packaged with mesh between layers

Shaded "Per Layer" or "Per Section" information is for dealer purposes.

Note: Some bundle quantities and weights may be rounded to the nearest decimal.

## 70-80MM SLABS + PAVERS

# Packaging Specifications

	Per Full Bundle					Per Layer			Per Section			
	Sq. Ft.	Lin. Ft.	Pieces	Wt. (lbs)	Layers	Sq. Ft.	Pieces	Wt. (lbs)	Sections	Sq. Ft.	Pieces	Wt. (lbs)
<b>MONTEBELLO 70mm</b>												
<b>Combo Bundle (8x12, 12x12, 12x16)</b>	93	94.5 (Sa)	32 each	3004	8 †	11.6	4 each	376	-	-	-	-
<b>8x12 Stone</b>	104	105 (Sol) 157.5 (Sa)	160	3340	8 †	13	20	418	4	26	40	835
<b>RIDGEFIELD PLUS 70mm</b>												
<b>Large Combo Bundle (8x12, 12x12, 12x16)</b>	93	94.5 (Sa)	32 each	3004	8	11.6	4 each	376	4	23.3	8 each	751
<b>8x12 Stone</b>	104	105 (Sol) 157.5 (Sa)	160	3340	8	13	20	418	4	26	40	835
<b>RIDGEFIELD SMOOTH 70mm</b>												
<b>Large Combo Bundle (8x12, 12x12, 12x16)</b>	93	94.5 (Sa)	32 each	3004	8 †	11.6	4 each	376	-	-	-	-
<b>8x12 Stone</b>	104	105 (Sol) 157.5 (Sa)	160	3340	8 †	13	20	418	4	26	40	835
<b>12x16 Stone</b>	93	70.9 (Sol) 94.5 (Sa)	72	2990	8 †	11.6	9	374	3	31	24	997
<b>ENVIRO MIDORI 80mm</b>												
<b>Random Bundle (5x10, 10x10, 10x15)</b>	74.4	94.5 (Sa)	60 (5x10) 54 (10x10) 24 (10x15)	2675	6 †	12.4	10 (5x10) 9 (10x10) 4 (10x15)	446	-	-	-	-
<b>MARKET PAVER 80mm</b>												
<b>4x8 Stone</b>	69.8	106.3 (Sol) 212.6 (Sa)	324	2684	6 †	11.6	54	447	6	11.6	54	447
<b>MOLINA® 80mm</b>												
<b>6x12 Stone</b>	69.8	70.8 (Sol) 141.7 (Sa)	144	2689	6 †	11.6	24	448	4	17.6	36	672
<b>12x24 Stone</b>	69.8	35.4 (Sol) 70.8 (Sa)	36	2778	6 †	11.6	6	463	-	-	-	-
<b>NUEVA® 80mm</b>												
<b>Random Bundle (8x16, 16x16, 16x24)</b>	77.5	59.1 (Sa)	18 (8x16) 18 (16x16) 12 (16x24)	2930	6 †	12.9	3 (8x16) 3 (16x16) 2 (16x24)	488	-	-	-	-
<b>8x16 Small Rectangle</b>	77.5	59.1 (Sol) 118.2 (Sa)	90	2902	6 †	12.9	15	484	3	25.8	30	967
<b>16x32 Large Rectangle</b>	83	31.5 (Sol) 63 (Sa)	24	3136	8 †	10.4	3	392	3	27.7	8	1045
<b>RIALTO 80mm</b>												
<b>Random Bundle (8x16, 16x16, 16x24)</b>	77.5	59.1 (Sa)	18 (8x16) 18 (16x16) 12 (16x24)	2930	6 †	12.9	3 (8x16) 3 (16x16) 2 (16x24)	488	-	-	-	-
<b>8x16 Stone</b>	77.5	59.1 (Sol) 118.2 (Sa)	90	2902	6 †	12.9	15	484	3	25.8	30	967
<b>16x24 Stone</b>	77.5	39.4 (Sol) 59.1 (Sa)	30	2930	6 †	12.9	5	488	-	-	-	-
<b>YORKVILLE 80mm</b>												
<b>Random Bundle (8x16, 16x16, 16x24)</b>	77.5	59.1 (Sa)	18 (8x16) 18 (16x16) 12 (16x24)	2930	6 †	12.9	3 (8x16) 3 (16x16) 2 (16x24)	488	-	-	-	-
<b>8x16 Small Rectangle</b>	77.5	59.1 (Sol) 118.2 (Sa)	90	2902	6 †	12.9	15	484	3	25.8	30	967

(Sol) = Soldier, (Sa) = Sailor  
† = Packaged with mesh between layers

Shaded "Per Layer" or "Per Section" information is for dealer purposes.

Note: Some bundle quantities and weights may be rounded to the nearest decimal.

# WALLS, STEPS, CURBS, COPINGS & CAPS

## Packaging Specifications

	Per Full Bundle					Per Layer				Per Section			
	Area/bundle (face ft.)	Lin. Ft.	Pieces	Wt. (lbs)	Layers	Sq. Ft.	Pieces	Wt. (lbs)	Sections	Sq. Ft.	Pieces	Wt. (lbs)	
<b>AMBASSADOR WALL</b>													
Wedge Unit	20.71	42.3	32	1760	4	5.18	8	440	-	-	-	-	
Corner Unit	23.3	47.6	36	2160	3	7.8	12	720	-	-	-	-	
<b>GARDENIA LINEAR</b>													
Linear Unit	31	63	32	2848	4	7.8	8	712	2	15.5	16	1424	
90° Corner Unit	51.6	104.4	64	2880	4	12.9	16	720	2	25.8	32	1440	
<b>LAREDO</b>													
Standard Unit	30.3	95.3	100	2800	5	6.1	20	560	4	7.6	25	700	
Tapered Unit	27.1 (Outside)	75.8	150	2700	5	5.4 (Outside)	30	540	6	5.2 (Outside)	25	450	
<b>LAREDO SMOOTH</b>													
Standard Unit	25.5	80	84	2352	6	4.3	14	392	4	6.4	21	588	
<b>MODAN</b>													
Combo Bundle (330, 440, 550, 660 Units)	28.1	78	12 each	2884	3 †	9.4	4 each	961	-	-	-	-	
Linear Unit	25 (Wall) 37.5 (Col)	69.3 (Wall) 104 (Col)	48	2544	3 †	8.3 (Wall) 12.5 (Col)	16	848	2	12.5	24	1272	
<b>NUEVA® 75</b>													
Combo Bundle (16", 20", 20" Corner/ End, 24" Units)	19.5	78	12 each	2589	6	3.3	2 each	432	-	-	-	-	
<b>NUEVA® 150</b>													
Combo Bundle (16", 20", 20" Corner/ End, 24" Units)	26	52.5	8 each	3200	4	6.5	2 each	800	-	-	-	-	
Corner/ Column Unit	29.1 (Wall) 48.4 (Col)	59	60	2880	4	7.3 (Wall) 12.1 (Col)	15	720	5	5.8 (Wall) 9.7 (Col)	12	576	
<b>ORTANA</b>													
Standard Unit	19.4	39.4	60	2760	3	6.5	20	920	4	4.9	15	690	
Tapered Unit	19.4	39.4	60	2400	3	6.5	20	800	4	4.9	15	600	
90° Corner Unit	19.4	39.4	24	1128	4	4.9	6	282	6	3.2	4	188	
1' Coping Unit	17.8	72	72	2520	6	12	12	420	4	44	18	630	
2' Coping Unit	11.8	48	24	1680	6	2	4	280	4	3	6	420	
<b>PROTERRA™ SMOOTH</b>													
Standard Unit	18	29.5	9	3150	3	6 3	1050	-	-	-	-	-	
Combo Bundle (Standard, Double)	6	9.8	3 each	3150	3	2 1 each	1050	-	-	-	-	-	
Triple Unit	6	9.8	3	3150	3	2 1	1050	-	-	-	-	-	
Standard Corner Unit	24.6	40.6	9	3150	3	8.2 3	1050	-	-	-	-	-	
Coping Corner/ End Unit	17.1	28.1	6	2400	3	5.7 2	800	-	-	-	-	-	
Coping-Step Unit	12	19.6	6	2388	3	4 2	796	-	-	-	-	-	

(Col) = Column, (Reg) = Regular, (End) = End Unit  
 † = Packaged with mesh between layers

Weights/Piece are approximate.

**Note:** Some bundle quantities and weights may be rounded to the nearest decimal.

# WALLS, STEPS, CURBS, COPINGS & CAPS

## Packaging Specifications

PROTERRA™ SPLIT	Area/bundle (face ft.)	Per Full Bundle			Per Layer				Per Section			
		Lin. Ft.	Pieces	Wt. (lbs)	Layers	Sq. Ft.	Pieces	Wt. (lbs)	Sections	Sq. Ft.	Pieces	Wt. (lbs)
<b>Standard Unit</b>	18	29.5	9	3150	3	6	3	1050	-	-	-	-
<b>Combo Bundle (Standard, Double)</b>	6	9.8	3 each	3150	3	2	1 each	1050	-	-	-	-
<b>Standard Corner Unit</b>	22.4	36.9	9	2772	3	7.4	3	924	-	-	-	-
<b>Coping Corner/ End Unit</b>	15.6	25.7	6	2088	3	5.2	2	696	-	-	-	-
<b>Coping-Step Unit</b>	12	19.6	6	2388	3	4	2	796	-	-	-	-
RIALTO WALL	Area/bundle (face ft.)	Lin. Ft.	Pieces	Wt. (lbs)	Layers	Sq. Ft.	Pieces	Wt. (lbs)	Sections	Sq. Ft.	Pieces	Wt. (lbs)
<b>Combo Bundle (16", 20", 24" Units)</b>	19.5	39.4	24 or 8 each	2368	4	4.87	2 each	592	-	-	-	-
<b>Corner/ Column Unit</b>	29.1 (Wall) 48.4 (Col)	31.5	32	1600	4	7.3 (Wall) 12.1 (Col)	8	400	2	14.6 (Wall) 24.2 (Col)	16	800

STEPS + CURBS	Per Full Bundle				Per Layer					Per Section				Per Pc.	
	Sq. Ft.	Lin. Ft.	Pieces	Wt. (lbs)	Layers	Sq. Ft.	Lin. Ft.	Pieces	Wt. (lbs)	Sections	Sq. Ft.	Lin. Ft.	Pieces	Wt. (lbs)	Wt./pc. (lbs)
<b>Nueva® Step</b>	7.8 (face) 20.6 (top)	15.7	4	1440	1	-	-	-	-	-	-	-	-	-	360
<b>Rialto Step</b>	7.8 (face) 20.6 (top)	15.7	4	1440	1	-	-	-	-	-	-	-	-	-	360
<b>Fronterra Curb</b>	-	125.1	108	2948	4	-	31.3	27	737	-	-	-	-	-	27.3
<b>Nueva® Curb</b>	-	126	64	2486	4	-	31.5	16	621.5	2	-	63	32	1243	38.8
COPINGS	Sq. Ft.	Lin. Ft.	Pieces	Wt. (lbs)	Layers	Sq. Ft.	Lin. Ft.	Pieces	Wt. (lbs)	Sections	Sq. Ft.	Lin. Ft.	Pieces	Wt. (lbs)	Wt./pc. (lbs)
<b>Cassina</b>	60	60	60	1980	2	30	30	30	990	3	20	20	20	660	33
<b>Modan Coping</b>	106.4	47.2	54	3105	9 †	-	5.9	6	345	-	-	-	-	-	57.5
<b>Nueva® Coping</b>	-	47.2	16 (Reg) 8 (End)	1872	8 †	-	5.9	2 (Reg) 1 (End)	234	-	-	-	-	-	78
<b>Nueva® Elite Coping</b>	-	47.2	16 (Reg) 8 (End)	1872	8 †	-	5.9	2 (Reg) 1 (End)	234	-	-	-	-	-	78
<b>Oasis</b>	85	72	36	2448	9 †	9.5	8	4	272	2	42.5	36	18	272	68
CAPS	Sq. Ft.	Lin. Ft.	Pieces	Wt. (lbs)	Layers	Sq. Ft.	Lin. Ft.	Pieces	Wt. (lbs)	Sections	Sq. Ft.	Lin. Ft.	Pieces	Wt. (lbs)	Wt./pc. (lbs)
<b>Nueva® Pillar Cap</b>	-	-	12	1560	6	-	-	2	260	2	-	-	6	780	130

(Reg) = Regular, (End) = End Unit  
 † = Packaged with mesh between layers

Weights/Piece are approximate.

**Note:** Some bundle quantities and weights may be rounded to the nearest decimal.

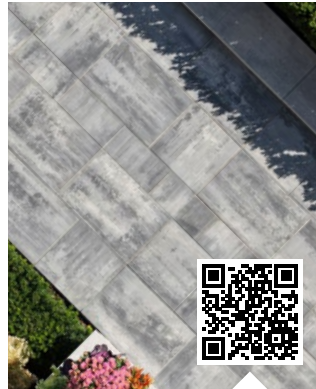
ONLINE TOOLS + RESOURCES

# Start planning your project at **OAKSpavers.com**



## Find your Inspiration

Browse our image gallery of installed products. Search by application type or product to find inspiration or examples of what you'd like to achieve.



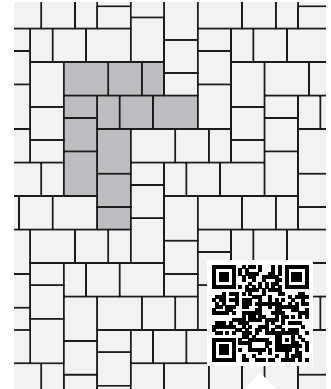
## Search for Products

Browse all of our products by product type or by color. Make selections and save them to your 'Favorites' to help narrow down your choices.



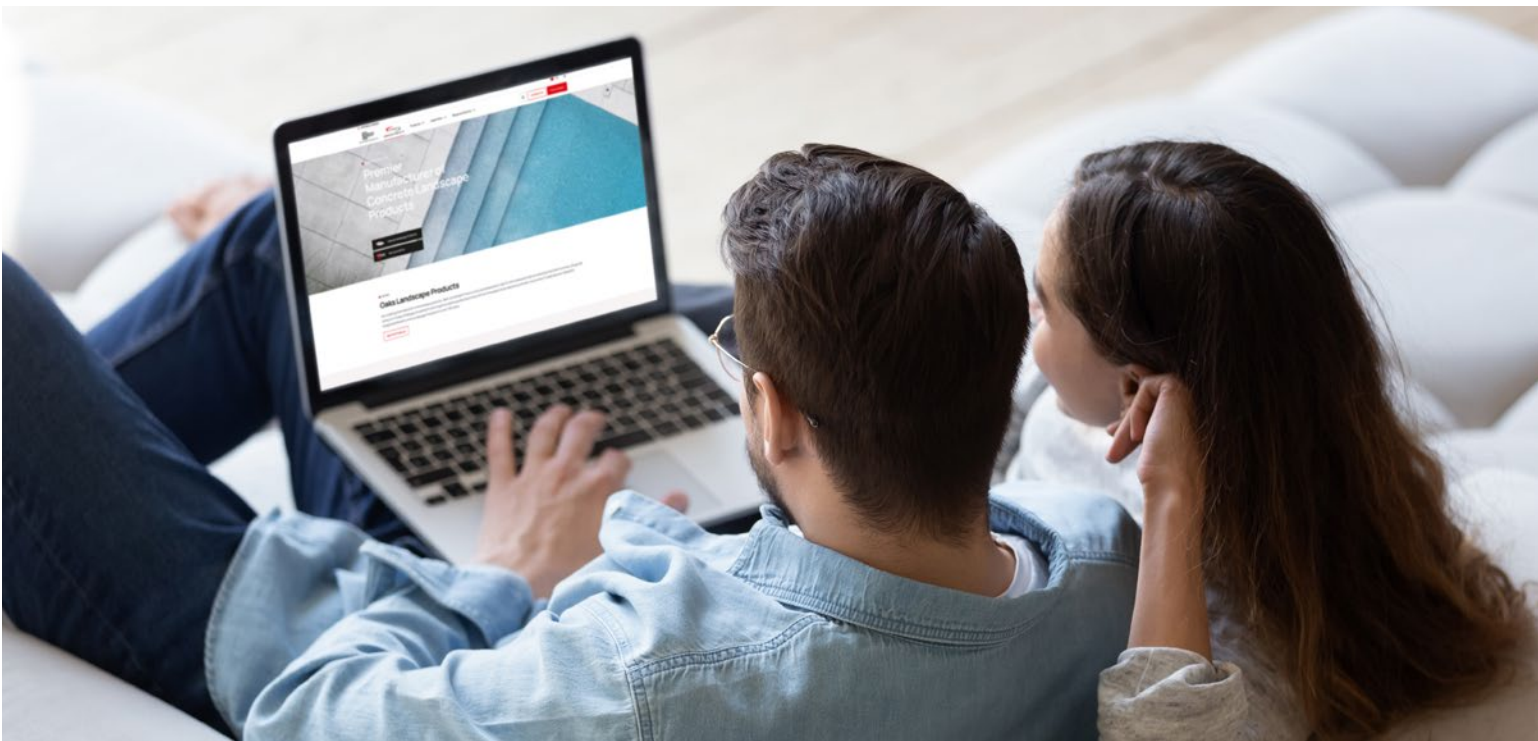
## Visualize your Project

Found a product or color you like? See it in action in the Project Visualizer. Upload a photo or use a pre-loaded image to help you visualize what it will look like installed.



## Resource Center

Our extensive Resource Center provides additional product information, technical information and other resources to help you plan your project.



# CONTRACTOR NEW RESOURCE

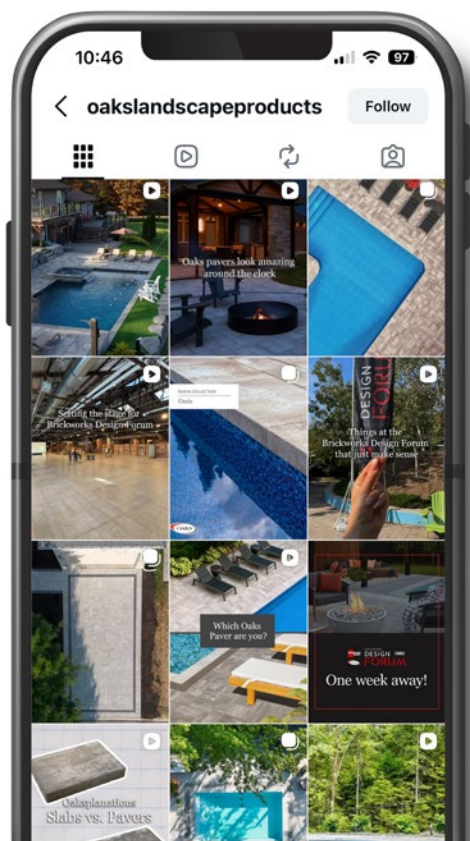
## Seamless Textures



### Have you tried our new seamless textures?

Available in Sketchup (.skm) or JPG format to use in your preferred design software. Visit our online Resource Center and download them today!

[Download Seamless Textures](#)



## How you are using Oaks products?

We would love to see how you are using our products in your landscape projects.

Share your Oaks project photos and **#tag or @mention oaklandscapeproducts**.



[@oaklandscapeproducts](#)



INDUSTRIAL, COMMERCIAL & INSTITUTIONAL

# Landscape Products

Oaks Landscape products have gained the reputation of innovation and versatility in the industrial, commercial and institutional (ICI) market. Our commitment to being supplier of choice drives the development and manufacturing of a wide variety of ICI products to meet all your structural and aesthetic design requirements.

- SLABS + PAVERS
- PERMEABLE PAVERS
- RETAINING AND GARDEN WALLS
- CURBS
- STEPS
- COPINGS + CAPS

Visit our website to view our ICI landscape products or download our Designer Resource Guide!



Designer Resource Guide





**Pavers:** Rialto 80mm, Marble Grey, Presidio, Onyx and Eterna, Cloudburst  
**Walls:** Proterra™ Smooth, Greyfield

## MADE TO ORDER (MTO) & ICI Products Listing

Made to order products are often used in commercial or larger residential projects and are not typically inventoried.

**Minimum quantities are required and a 4-8 week lead time is to be expected.**

### **BEAUMONT 80mm**

4x8 Standard Bundle  
8x8 Stone  
8x12 Stone

### **CLASSIC DOME PAVERS 60mm - Warning Paver**

4x8 Stone

### **CLASSIC SERIES 80mm**

4x8 Standard Bundle  
8x8 Stone

### **ENVIRO MIDORI 80mm - Permeable**

Herringbone Bundle

### **ETERNA 100mm**

100x300 Stone  
100x400 Stone  
200x600 Stone  
400x600 Stone

### **HYDR'EAU PAVE 80mm - Permeable**

Combo Bundle

### **MOLINA® 80mm**

12x12 Stone

### **MOLINA® FERRO FINISH 60/80mm - Slip Resistant**

6x12 Stone  
12x24 Stone  
24x24 Stone

### **PRESIDIO 80mm**

Rectangle Stone  
Combo Bundle

### **TACTILE DOME PAVER 50mm - Warning Paver**

12x12 Stone

### **TURF-SLAB 80mm - Permeable**

400x600 Stone

**Visit [OAKSpavers.com](https://www.oakspavers.com) to view all of our stock and made to order products.**



## OAKSPAVERS.COM

 1.800.876.OAKS (6257)

 1.800.709.OAKS (6257)

### DETROIT

51744 PONTIAC TRAIL  
WIXOM, MI 48393

### BRAMPTON

225 WANLESS DRIVE  
BRAMPTON, ON L7A 1E9

### CAMBRIDGE

1038 RIFE ROAD  
CAMBRIDGE, ON N1R 5S3

### HILLSDALE

2108 FLOS ROAD FOUR EAST  
HILLSDALE, ON L0L 1V0

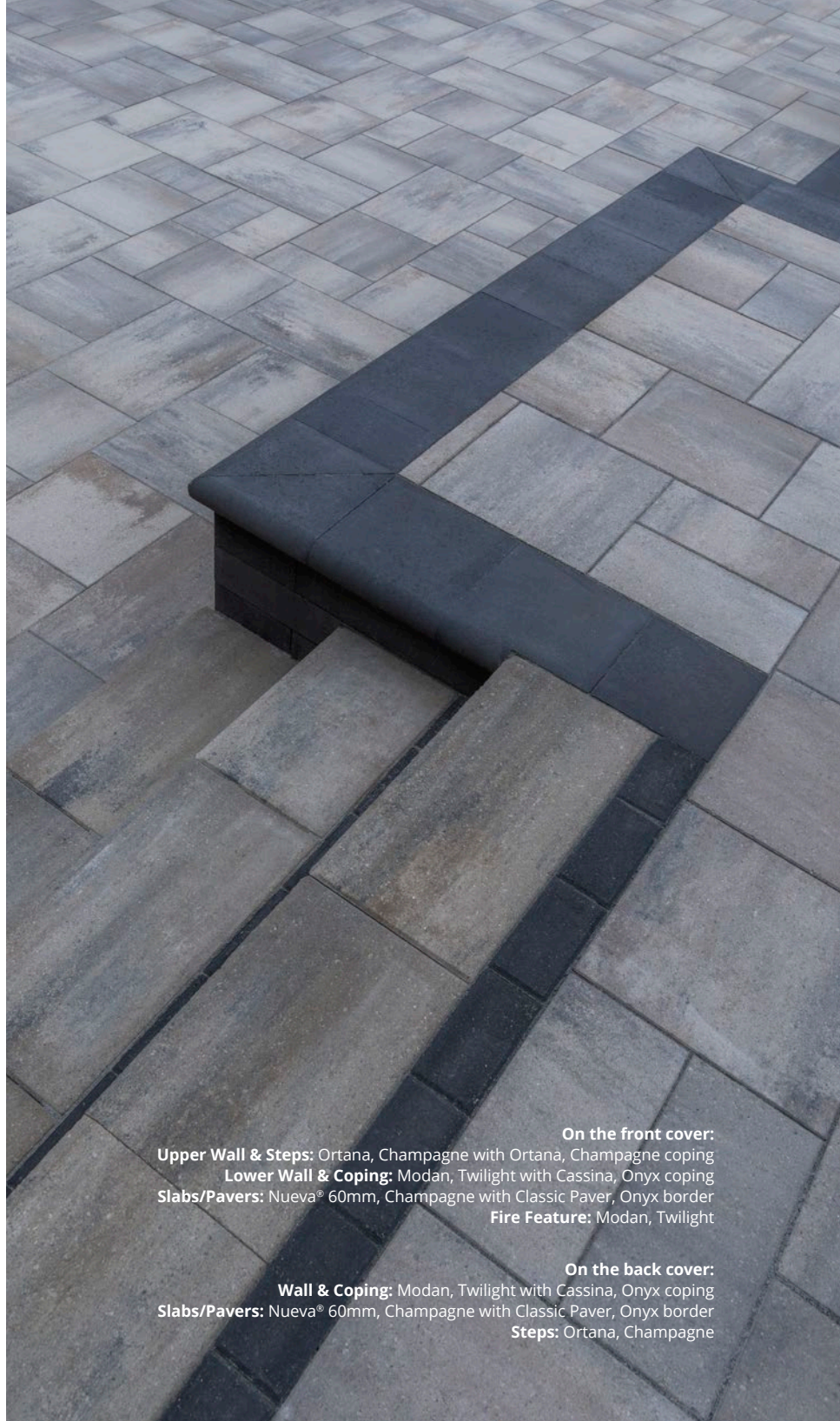
### MARKHAM

455 RODICK ROAD  
MARKHAM, ON L6G 1B2

### MEMBER OF:



CONCRETE  
MASONRY &  
HARDSCAPES  
ASSOCIATION



**On the front cover:**  
**Upper Wall & Steps:** Ortana, Champagne with Ortana, Champagne coping  
**Lower Wall & Coping:** Modan, Twilight with Cassina, Onyx coping  
**Slabs/Pavers:** Nueva® 60mm, Champagne with Classic Paver, Onyx border  
**Fire Feature:** Modan, Twilight

**On the back cover:**  
**Wall & Coping:** Modan, Twilight with Cassina, Onyx coping  
**Slabs/Pavers:** Nueva® 60mm, Champagne with Classic Paver, Onyx border  
**Steps:** Ortana, Champagne